

For Research Use Only

# CoraLite® Plus 488-conjugated MMP1 Recombinant antibody

Catalog Number:CL488-83114-2



## Basic Information

**Catalog Number:**

CL488-83114-2

**Size:**

100ul , Concentration: 1000 ug/ml by  
Nanodrop;

**Source:**

Rabbit

**Isotype:**

IgG

**GenBank Accession Number:**

BC013875

**GeneID (NCBI):**

4312

**UNIPROT ID:**

P03956

**Full Name:**

matrix metalloproteinase 1  
(interstitial collagenase)

**Calculated MW:**

54 kDa

**Observed MW:**

45-48 kDa

**Purification Method:**

Protein A purification

**CloneNo.:**

230343G1

**Recommended Dilutions:**

IF/ICC 1:50-1:500

**Excitation/Emission maxima  
wavelengths:**

493 nm / 522 nm

## Applications

**Tested Applications:**

IF/ICC

**Species Specificity:**

human

**Positive Controls:**

IF/ICC : MCF-7 cells,

## Background Information

MMP1, also named as CLG, belongs to the peptidase M10A family. MMP is the main enzyme that cleaves fibrillar collagen, namely types I, II, III, VII, and X. It is involved in cell migration and invasion, and is frequently up-regulated in cancer cells. It can be cleavage to two major forms (22 kDa and 27 kDa) by undergoing autolytic, and the minor form (25 kDa) is the glycosylated form of the 22 kDa form. The 27 kDa form has no activity while the 22/25 kDa form can act as activator for collagenase. The sizes of pro-MMP-1 and active MMP-1 from human synovial fibroblasts have been reported as 52 to 56 kDa, depending on glycosylation, and 41 to 45 kDa, respectively. In addition, a band of 62-kDa observed in the current study is pro-MMP-1 (PMID:9418730).

## Storage

**Storage:**

Store at -20°C. Avoid exposure to light. Stable for one year after shipment.

**Storage Buffer:**

PBS with 50% Glycerol, 0.05% Proclin300, 0.5% BSA, pH 7.3.

Aliquoting is unnecessary for -20°C storage

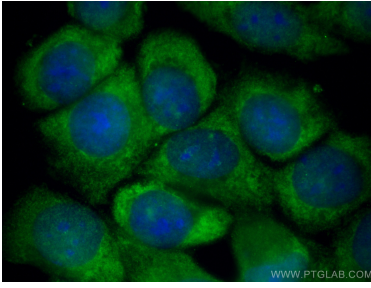
For technical support and original validation data for this product please contact:

T: 1 (888) 4PTGLAB (1-888-478-4522) (toll free  
in USA), or 1(312) 455-8498 (outside USA)

E: [proteintech@ptglab.com](mailto:proteintech@ptglab.com)  
W: [ptglab.com](http://ptglab.com)

**This product is exclusively available under Proteintech Group brand and is not available to purchase from any other manufacturer.**

## Selected Validation Data



Immunofluorescent analysis of (-20°C Methanol) fixed MCF-7 cells using CoraLite® Plus 488 MMP1 antibody (CL488-83114-2, Clone: 230343G1) at dilution of 1:200.