

For Research Use Only

# CoraLite® Plus 488-conjugated Integrin beta 3 Recombinant antibody

Catalog Number:CL488-83053-4



## Basic Information

<b>Catalog Number:</b> CL488-83053-4	<b>GenBank Accession Number:</b> BC127667	<b>Purification Method:</b> Protein A purification
<b>Size:</b> 100ul , Concentration: 1000 ug/ml by Nanodrop;	<b>GeneID (NCBI):</b> 3690	<b>CloneNo.:</b> 230292D5
<b>Source:</b> Rabbit	<b>UNIPROT ID:</b> P05106	<b>Excitation/Emission maxima wavelengths:</b> 493 nm / 522 nm
<b>Isotype:</b> IgG	<b>Full Name:</b> integrin, beta 3 (platelet glycoprotein IIIa, antigen CD61)	
	<b>Calculated MW:</b> 87 kDa	
	<b>Observed MW:</b> 100-110 kDa	

## Applications

**Tested Applications:**  
FC (Intra)

**Species Specificity:**  
human

## Background Information

Integrin beta-3, also named as CD61 and GPIIIa, is a receptor for cytotactin, fibronectin, laminin, matrix metalloproteinase-2, osteopontin, osteomodulin, prothrombin, thrombospondin, vitronectin and von Willebrand factor. Integrin beta-3 recognize the sequence R-G-D in a wide array of ligands and the sequence H-H-L-G-G-A-K-Q-A-G-D-V in fibrinogen gamma chain. Following activation integrin beta-3 brings about platelet/platelet interaction through binding of soluble fibrinogen which leads to rapid platelet aggregation which physically plugs ruptured endothelial surface. In case of HIV-1 infection, the interaction with extracellular viral Tat protein seems to enhance angiogenesis in Kaposi's sarcoma lesions. Human integrin beta-3 has a calculated molecular weight of 87 kDa. As a result of glycosylation, the apparent molecular mass of integrin beta-3 is approximately 90-110 kDa.

## Storage

**Storage:**  
Store at -20°C. Avoid exposure to light. Stable for one year after shipment.

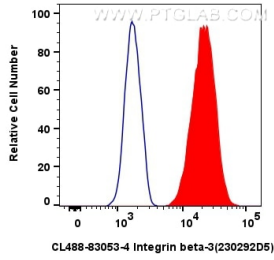
**Storage Buffer:**  
PBS with 50% Glycerol, 0.05% Proclin300, 0.5% BSA, pH 7.3.

Aliquoting is unnecessary for -20°C storage

For technical support and original validation data for this product please contact:  
T: 1 (888) 4PTGLAB (1-888-478-4522) (toll free in USA), or 1(312) 455-8498 (outside USA)      E: proteintech@ptglab.com  
W: ptglab.com

This product is exclusively available under Proteintech Group brand and is not available to purchase from any other manufacturer.

## Selected Validation Data



1x10<sup>6</sup> HUVEC cells were intracellularly stained with 0.8 ug Coralite® Plus 488 Integrin Beta-3 Recombinant Antibody (CL488-83053-4, Clone:230292D5)(red), or 0.8 ug CoraLite® Plus 488-conjugated Rabbit IgG control Rabbit PolyAb (CL488-30000) (blue). Cells were fixed with 4% PFA and permeabilized with Flow Cytometry Perm Buffer (PF00011-C).