

For Research Use Only

CoraLite® Plus 488-conjugated SURF1 Recombinant antibody

Catalog Number:CL488-83052-6



Basic Information

Catalog Number: CL488-83052-6	GenBank Accession Number: BC028314	Purification Method: Protein A purification
Size: 100ul , Concentration: 1000 ug/ml by Nanodrop;	GeneID (NCBI): 6834	CloneNo.: 230210E12
Source: Rabbit	UNIPROT ID: Q15526	Excitation/Emission maxima wavelengths: 493 nm / 522 nm
Isotype: IgG	Full Name: surfeit 1	
Immunogen Catalog Number: AG3959	Calculated MW: 33 kDa	
	Observed MW: 30-31 kDa	

Applications

Tested Applications:
FC (Intra)

Species Specificity:
human

Background Information

SURF1 (Surfeit locus protein 1), also known as SURF-1. It is expected to be located in mitochondrion inner membrane, which is ubiquitinated in thyroid and kidney. This gene encodes a protein localized to the inner mitochondrial membrane and thought to be involved in the biogenesis of the cytochrome c oxidase complex. The protein is a member of the SURF1 family, which includes the related yeast protein SHY1 and rickettsial protein RP733. The gene is located in the surfeit gene cluster, a group of very tightly linked genes that do not share sequence similarity, where it shares a bidirectional promoter with SURF2 on the opposite strand. Defects in this gene are a cause of Leigh syndrome, a severe neurological disorder that is commonly associated with systemic cytochrome c oxidase deficiency. The molecular weight of SURF1 is 33 kDa.

Storage

Storage:
Store at -20°C. Avoid exposure to light. Stable for one year after shipment.

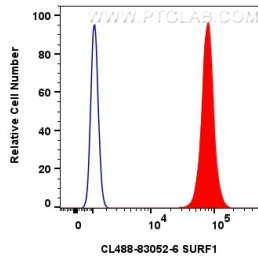
Storage Buffer:
PBS with 50% Glycerol, 0.05% Proclin300, 0.5% BSA, pH 7.3.

Aliquoting is unnecessary for -20°C storage

For technical support and original validation data for this product please contact:
T: 1 (888) 4PTGLAB (1-888-478-4522) (toll free in USA), or 1(312) 455-8498 (outside USA) E: proteintech@ptglab.com
W: ptglab.com

This product is exclusively available under Proteintech Group brand and is not available to purchase from any other manufacturer.

Selected Validation Data



1x10⁶ HepG2 cells were intracellularly stained with 0.8 ug Coralite® Plus 488 Surf1 Recombinant Antibody (CL488-83052-6, Clone:230210E12)(red), or 0.8 ug Coralite® Plus 488-conjugated Rabbit IgG control Rabbit PolyAb (CL488-30000) (blue). Cells were fixed with 4% PFA and permeabilized with Flow Cytometry Perm Buffer (PF00011-C).