

For Research Use Only

CoraLite® Plus 488-conjugated PPP1R15B Recombinant antibody

Catalog Number:CL488-83016-6

Featured Product



Basic Information

Catalog Number:

CL488-83016-6

Size:

100ul , Concentration: 1000 ug/ml by
Nanodrop;

Source:

Rabbit

Isotype:

IgG

Immunogen Catalog Number:

AG6213

GenBank Accession Number:

BC065280

GeneID (NCBI):

84919

UNIPROT ID:

Q5SWA1

Full Name:

protein phosphatase 1, regulatory
(inhibitor) subunit 15B

Calculated MW:

79 kDa

Observed MW:

100-110 kDa

Purification Method:

Protein A purification

CloneNo.:

240052G5

Recommended Dilutions:

IF/ICC 1:50-1:500

Excitation/Emission maxima
wavelengths:

493 nm / 522 nm

Applications

Tested Applications:

IF/ICC, FC (Intra)

Species Specificity:

human

Positive Controls:

IF/ICC : HepG2 cells,

Background Information

Protein phosphatase 1 regulatory subunit 15B(PPP1R15B) is a member of PPP1R15 family, it forms a complex with protein phosphatase1(PP1) and NCK1/2, maintaining low levels of EIF2S1 phosphorylation in unstressed cells, thus is also named constitutive repressor of eIF2alpha phosphorylation (CReP). PPP1R15B is associated in endoplasmic reticulum (ER) stress response resulting to a role in translation regulation. Knock-down of PPP1R15B strongly protected mammalian cells against oxidative stress, peroxynitrite stress, and more modestly against accumulation of malformed proteins in the ER. Recently, PPP1R15B was found to associate with cell membranes and regulate membrane traffic in a PP1c-independent manner, suggesting a novel link between translation and traffic. MW of PPP1R15B is 80 kDa. Observed MW of PPP1R15B is from 100-110 kDa maybe due to phosphorylation (PMID: 28492545).

Storage

Storage:

Store at -20°C. Avoid exposure to light. Stable for one year after shipment.

Storage Buffer:

PBS with 50% glycerol, 0.05% Proclin300, 0.5% BSA

Aliquoting is unnecessary for -20°C storage

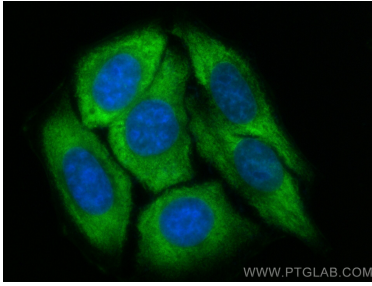
For technical support and original validation data for this product please contact:

T: 1 (888) 4PTGLAB (1-888-478-4522) (toll free
in USA), or 1(312) 455-8498 (outside USA)

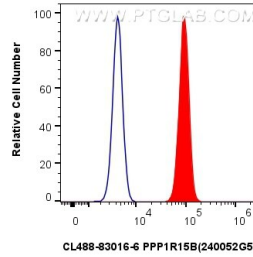
E: proteintech@ptglab.com
W: ptglab.com

This product is exclusively available under Proteintech Group brand and is not available to purchase from any other manufacturer.

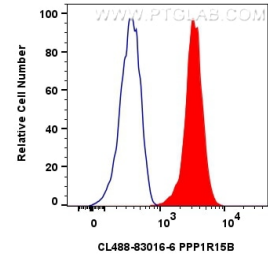
Selected Validation Data



Immunofluorescent analysis of (-20°C Ethanol) fixed HepG2 cells using CoraLite® Plus 488 PPP1R15B antibody (CL488-83016-6, Clone: 240052G5) at dilution of 1:200.



1x10⁶ U-2 OS were intracellularly stained with 0.4 ug CoraLite® Plus 488 Ppp1r15b Recombinant Antibody (CL488-83016-6, Clone:240052G5), and 0.4 ug CoraLite® Plus 488-conjugated Rabbit IgG control Rabbit PolyAb (CL488-30000). Cells were fixed with 4% PFA and permeabilized with Flow Cytometry Perm Buffer (PF00011-C).



1x10⁶ HepG2 cells were intracellularly stained with 0.4 ug CoraLite® Plus 488 Ppp1r15b Recombinant Antibody (CL488-83016-6, Clone:240052G5)(red), or 0.4 ug CoraLite® Plus 488-conjugated Rabbit IgG control Rabbit PolyAb (CL488-30000) (blue). Cells were fixed with 4% PFA and permeabilized with Flow Cytometry Perm Buffer (PF00011-C).