

For Research Use Only

CoraLite® Plus 488-conjugated golgin 97 Recombinant antibody

Catalog Number:CL488-83009-4



Basic Information

Catalog Number:

CL488-83009-4

Size:

100ul , Concentration: 1000 µg/ml by Nanodrop;

Source:

Rabbit

Isotype:

IgG

Immunogen Catalog Number:

AG3335

GenBank Accession Number:

BC032853

GeneID (NCBI):

2800

UNIPROT ID:

Q92805

Full Name:

golgi autoantigen, golgin subfamily a, 1

Calculated MW:

767 aa, 88 kDa

Observed MW:

97 kDa

Purification Method:

Protein A purification

CloneNo.:

230523A5

Recommended Dilutions:

IF/ICC 1:50-1:500

Excitation/Emission maxima

wavelengths:

493 nm / 522 nm

Applications

Tested Applications:

IF/ICC

Species Specificity:

human

Positive Controls:

IF/ICC : HepG2 cells,

Background Information

Golgin subfamily A member 1 is a protein that in humans is encoded by the GOLGA1 gene. GOLGA1 has been shown to interact with ARL1. GOLGA1 is associated with Sjogren's syndrome. IF result shows strong Golgi staining.

Storage

Storage:

Store at -20°C. Avoid exposure to light. Stable for one year after shipment.

Storage Buffer:

PBS with 50% Glycerol, 0.05% Proclin300, 0.5% BSA, pH 7.3.

Aliquoting is unnecessary for -20°C storage

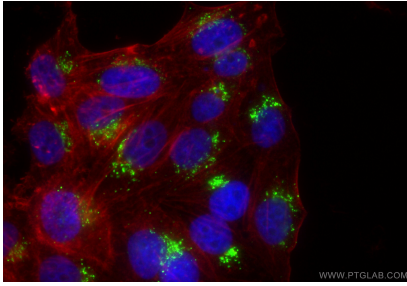
For technical support and original validation data for this product please contact:

T: 1 (888) 4PTGLAB (1-888-478-4522) (toll free in USA), or 1(312) 455-8498 (outside USA)

E: proteintech@ptglab.com
W: ptglab.com

This product is exclusively available under Proteintech Group brand and is not available to purchase from any other manufacturer.

Selected Validation Data



Immunofluorescent analysis of (4% PFA) fixed HepG2 cells using CoraLite® Plus 488 golgin 97 antibody (CL488-83009-4, Clone: 230523A5) at dilution of 1:200, CL594-Phalloidin (red).