

For Research Use Only

CoraLite® Plus 488-conjugated FDX1 Recombinant antibody

Catalog Number:CL488-82957



Basic Information

Catalog Number:

CL488-82957

Size:

100ul , Concentration: 1000 ug/ml by Nanodrop;

Source:

Rabbit

Isotype:

IgG

Immunogen Catalog Number:

AG3301

GenBank Accession Number:

BC017063

GeneID (NCBI):

2230

UNIPROT ID:

P10109

Full Name:

ferredoxin 1

Calculated MW:

184 aa, 19 kDa

Observed MW:

14 kDa

Purification Method:

Protein A purification

CloneNo.:

230196B12

Recommended Dilutions:

IF/ICC 1:50-1:500

Excitation/Emission maxima wavelengths:

493 nm / 522 nm

Applications

Tested Applications:

IF/ICC, FC (Intra)

Species Specificity:

human

Positive Controls:

IF/ICC : HepG2 cells,

Background Information

FDX1(Ferredoxin-1) is also named as ADX, FDX, YAH1, LOH11CR1D and belongs to the adrenodoxin/putidaredoxin family. It is a small iron-sulfur protein that transfers electrons from NADPH through ferredoxin reductase to a terminal cytochrome P450 and it can only reduce mitochondrial CYP enzymes that are essential in adrenal steroidogenesis, bile acid formation, and vitamin D synthesis. The full length has a transit peptide of 60 amino acids.

Storage

Storage:

Store at -20°C. Avoid exposure to light. Stable for one year after shipment.

Storage Buffer:

PBS with 50% Glycerol, 0.05% Proclin300, 0.5% BSA, pH 7.3.

Aliquoting is unnecessary for -20°C storage

For technical support and original validation data for this product please contact:

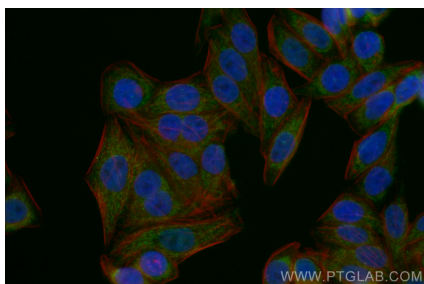
T: 1 (888) 4PTGLAB (1-888-478-4522) (toll free in USA), or 1(312) 455-8498 (outside USA)

E: proteintech@ptglab.com

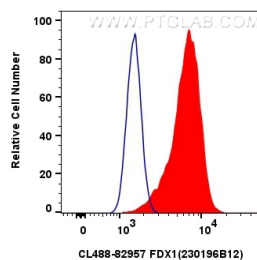
W: ptglab.com

This product is exclusively available under Proteintech Group brand and is not available to purchase from any other manufacturer.

Selected Validation Data



Immunofluorescent analysis of (4% PFA) fixed HepG2 cells using CoraLite® Plus 488 FDX1 antibody (CL488-82957, Clone: 230196B12) at dilution of 1:200.



1x10⁶ A431 cells were intracellularly stained with 0.8 ug CoraLite® Plus 488 Fdx1 Recombinant Antibody (CL488-82957, Clone:230196B12)(red), or 0.8 ug CoraLite® Plus 488-conjugated Rabbit IgG control Rabbit PolyAb (CL488-30000) (blue). Cells were fixed with 4% PFA and permeabilized with Flow Cytometry Perm Buffer (PF00011-C).