

For Research Use Only

CoraLite® Plus 488-conjugated IFT140 Recombinant antibody

Catalog Number:CL488-82947-7



Basic Information

Catalog Number: CL488-82947-7	GenBank Accession Number: BC035577	Purification Method: Protein A purification
Size: 100ul , Concentration: 1000 µg/ml by Nanodrop;	GeneID (NCBI): 9742	CloneNo.: 230231D5
Source: Rabbit	UNIPROT ID: Q96RY7	Recommended Dilutions: IF/ICC 1:50-1:500
Isotype: IgG	Full Name: intraflagellar transport 140 homolog (Chlamydomonas)	Excitation/Emission maxima wavelenghts: 493 nm / 522 nm
Immunogen Catalog Number: AG11119	Calculated MW: 1462 aa, 165 kDa	
	Observed MW: 150-165 kDa	

Applications

Tested Applications: IF/ICC	Positive Controls: IF/ICC : hTERT-RPE1 cells,
Species Specificity: human	

Background Information

IFT140 is a subunit of intraflagellar transport complex A (IFT-A) which is involved in retrograde ciliary transport. RT-PCR analysis showed it is highly expressed in kidney, moderately in ovary, testis, prostate, and lung. IFT140 is localized to the base and tip of primary cilium. IFT140 has a pivotal role in development and function of ciliated cells, and mutations of IFT140 cause skeletal, renal, and retinal ciliopathies. It had been detected as a single band around 140-165 kDa in different reports (PMID: 20368623, 22282595).

Storage

Storage:
Store at -20°C. Avoid exposure to light. Stable for one year after shipment.
Storage Buffer:
PBS with 50% Glycerol, 0.05% Proclin300, 0.5% BSA, pH 7.3.
Aliquoting is unnecessary for -20°C storage

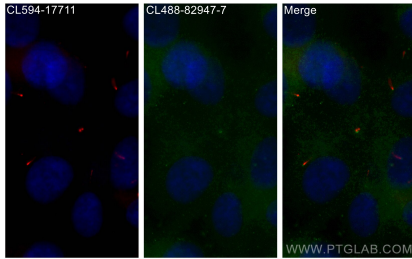
For technical support and original validation data for this product please contact:

T: 1 (888) 4PTGLAB (1-888-478-4522) (toll free in USA), or 1(312) 455-8498 (outside USA)

E: proteintech@ptglab.com
W: ptglab.com

This product is exclusively available under Proteintech Group brand and is not available to purchase from any other manufacturer.

Selected Validation Data



Immunofluorescent analysis of (-20°C Methanol) fixed hTERT-RPE1 cells using CoraLite® Plus 488 IFT140 antibody (CL488-82947-7, Clone: 230231D5) at dilution of 1:200, CoraLite®594 ARL13B antibody (CL594-17711, red).