

For Research Use Only

CoraLite® Plus 488-conjugated RORA Recombinant antibody

Catalog Number:CL488-82930



Basic Information

Catalog Number: CL488-82930	GenBank Accession Number: BC008831	Purification Method: Protein A purification
Size: 100ul , Concentration: 1000 ug/ml by Nanodrop;	GeneID (NCBI): 6095	CloneNo.: 230217G6
Source: Rabbit	UNIPROT ID: P35398	Recommended Dilutions: IF/ICC 1:50-1:500
Isotype: IgG	Full Name: RAR-related orphan receptor A	Excitation/Emission maxima wavelengths: 493 nm / 522 nm
Immunogen Catalog Number: AG0944	Calculated MW: 59 kDa	
	Observed MW: 60-66 kDa	

Applications

Tested Applications: IF/ICC	Positive Controls: IF/ICC : HepG2 cells,
Species Specificity: human, rat	

Background Information

RORA is a steroid hormone receptor and has been implicated in the pathology of circadian rhythms, bone growth, angiogenesis, development of cones, cellular metabolism and a mediator in the immune and lipid metabolism pathways [PMID:21998696]. It binds DNA as a monomer to hormone response elements (HRE) containing a single core motif half-site preceded by a short A-T-rich sequence, which binds to the consensus sequence 5'-[AT][TA]A[AT][CGT]TAGGTCA-3'. Regulates a number of genes involved in lipid metabolism such as apolipoproteins AI, APOA5, CIII, CYP71 and PPAR gamma, in cerebellum and photoreceptor development including PCP2, OPN1SW, OPN1SM and ARR3, in circadian rhythm with BMAL1, and skeletal muscle development with MYOD1 [PMID:11053433,14570920].

Storage

Storage:
Store at -20°C. Avoid exposure to light. Stable for one year after shipment.
Storage Buffer:
PBS with 50% Glycerol, 0.05% Proclin300, 0.5% BSA, pH 7.3.
Aliquoting is unnecessary for -20°C storage

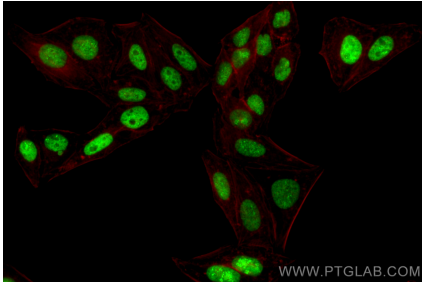
For technical support and original validation data for this product please contact:

T: 1 (888) 4PTGLAB (1-888-478-4522) (toll free
in USA), or 1(312) 455-8498 (outside USA)

E: proteintech@ptglab.com
W: ptglab.com

This product is exclusively available under Proteintech Group brand and is not available to purchase from any other manufacturer.

Selected Validation Data



Immunofluorescent analysis of (4% PFA) fixed HepG2 cells using Coralite® Plus 488 RORA antibody (CL488-82930, Clone: 230217G6) at dilution of 1:200.