

For Research Use Only

CoraLite® Plus 488-conjugated STMN2 Recombinant antibody

Catalog Number:CL488-82925-2



Basic Information

Catalog Number: CL488-82925-2	GenBank Accession Number: BC006302	Purification Method: Protein A purification
Size: 100ul , Concentration: 1000 µg/ml by Nanodrop;	GeneID (NCBI): 11075	CloneNo.: 230110B12
Source: Rabbit	UNIPROT ID: Q93045	Recommended Dilutions: IF/ICC 1:50-1:500
Isotype: IgG	Full Name: stathmin-Like 2	Excitation/Emission maxima wavelengths: 493 nm / 522 nm
Immunogen Catalog Number: AG0929	Calculated MW: 21 kDa	
	Observed MW: 18-21 kDa	

Applications

Tested Applications: IF/ICC	Positive Controls: IF/ICC : SH-SY5Y cells,
Species Specificity: human, mouse	

Background Information

Stathmin-2 (encoded by STMN2), a member of the stathmin family of proteins, encodes a phosphoprotein that has an important role in microtubule dynamics. The STMN2 protein promotes microtubule dynamics in axonal growth cones, and is thought to play an important role in neurite outgrowth. STMN2 protein is localized in both Golgi and cytosolic compartments. Its expression appears modulated in osteoblasts by nerve growth factor, dexamethasone or RhoA kinase inhibitor Y-27632 which are known effectors of osteogenesis. (PMID: 33841129, PMID: 18611392)

Storage

Storage:
Store at -20°C. Avoid exposure to light. Stable for one year after shipment.
Storage Buffer:
PBS with 50% Glycerol, 0.05% Proclin300, 0.5% BSA, pH 7.3.
Aliquoting is unnecessary for -20°C storage

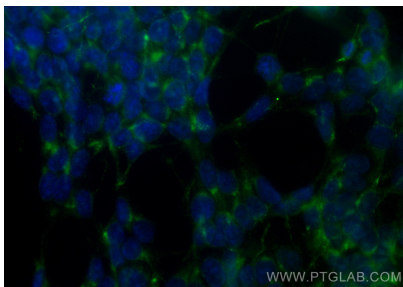
For technical support and original validation data for this product please contact:

T: 1 (888) 4PTGLAB (1-888-478-4522) (toll free
in USA), or 1(312) 455-8498 (outside USA)

E: proteintech@ptglab.com
W: ptglab.com

This product is exclusively available under Proteintech Group brand and is not available to purchase from any other manufacturer.

Selected Validation Data



Immunofluorescent analysis of (-20°C Ethanol) fixed SH-SY5Y cells using CoraLite® Plus 488 STMN2 antibody (CL488-82925-2, Clone: 230110B12) at dilution of 1:200.