

For Research Use Only

# CoraLite® Plus 488-conjugated NFX1 Recombinant antibody



Catalog Number: CL488-82924

## Basic Information

<b>Catalog Number:</b> CL488-82924	<b>GenBank Accession Number:</b> BC012151	<b>Purification Method:</b> Protein A purification
<b>Size:</b> 100ul , Concentration: 1000 µg/ml by Nanodrop;	<b>GeneID (NCBI):</b> 4799	<b>CloneNo.:</b> 230211D9
<b>Source:</b> Rabbit	<b>UNIPROT ID:</b> Q12986	<b>Recommended Dilutions:</b> IF/ICC 1:50-1:500
<b>Isotype:</b> IgG	<b>Full Name:</b> nuclear transcription factor, X-box binding 1	<b>Excitation/Emission maxima wavelengths:</b> 493 nm / 522 nm
<b>Immunogen Catalog Number:</b> AG9448	<b>Calculated MW:</b> 1120 aa, 124 kDa	

## Applications

<b>Tested Applications:</b> IF/ICC, FC (Intra)	<b>Positive Controls:</b> IF/ICC : HeLa cells,
<b>Species Specificity:</b> human	

## Storage

**Storage:**  
Store at -20°C. Avoid exposure to light. Stable for one year after shipment.  
**Storage Buffer:**  
PBS with 50% Glycerol, 0.05% Proclin300, 0.5% BSA, pH 7.3.  
Aliquoting is unnecessary for -20°C storage

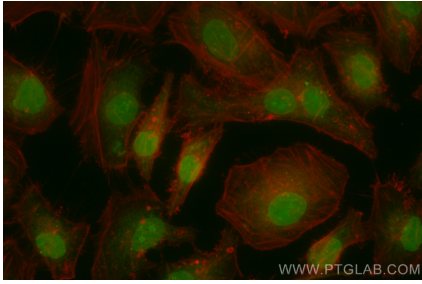
For technical support and original validation data for this product please contact:

T: 1 (888) 4PTGLAB (1-888-478-4522) (toll free  
in USA), or 1(312) 455-8498 (outside USA)

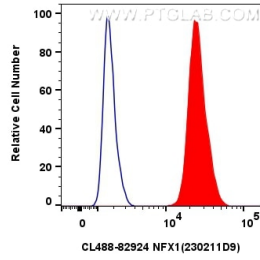
E: [proteintech@ptglab.com](mailto:proteintech@ptglab.com)  
W: [ptglab.com](http://ptglab.com)

**This product is exclusively available under Proteintech  
Group brand and is not available to purchase from any  
other manufacturer.**

## Selected Validation Data



Immunofluorescent analysis of (4% PFA) fixed HeLa cells using Coralite® Plus 488 NFX1 antibody (CL488-82924, Clone: 230211D9) at dilution of 1:200.



1x10<sup>6</sup> PC-3 cells were intracellularly stained with 0.8 ug Coralite® Plus 488 Nfx1 Recombinant Antibody (CL488-82924, Clone:230211D9)(red), or 0.8 ug Coralite® Plus 488-conjugated Rabbit IgG control Rabbit PolyAb (CL488-30000) (blue). Cells were fixed and permeabilized with Transcription Factor Staining Buffer Kit (PF00011).