

For Research Use Only

CoraLite® Plus 488-conjugated PICK1 Recombinant antibody

Catalog Number:CL488-82919



Basic Information

Catalog Number: CL488-82919	GenBank Accession Number: BC017561	Purification Method: Protein A purification
Size: 100ul , Concentration: 1000 ug/ml by Nanodrop;	GeneID (NCBI): 9463	CloneNo.: 230185B8
Source: Rabbit	UNIPROT ID: Q9NRD5	Excitation/Emission maxima wavelengths: 493 nm / 522 nm
Isotype: IgG	Full Name: protein interacting with PRKCA 1	
Immunogen Catalog Number: AG1443	Calculated MW: 47 kDa	
	Observed MW: 50 kDa	

Applications

Tested Applications:
FC (Intra)

Species Specificity:
human, mouse, rat, pig

Background Information

Protein interacting with C kinase 1 (PICK1) was first cloned as a PKC-binding partner through yeast two hybrid system. PICK1 acts as a critical regulator of membrane receptors' subcellular trafficking to modulate neural processes such as learning and memory, and is widely expressed in brain, testis, heart, lung, liver, kidney and muscle. It probably binds to and organize the subcellular localization of a variety of membrane proteins containing some PDZ recognition sequence, for instance, PICK1 is a critical mediator of α -amino-3-hydroxy-5-methyl-4-isoxazolepropionic acid receptor (AMPA) trafficking in neural synapses. PICK1 expression on D-serine release and glutamate transport in astrocytes suggests a potential implication of PICK1 in the progression of amyotrophic lateral sclerosis (ALS). PICK1 may also participate in breast cancer development through inhibition of TGF- β signaling.

Storage

Storage:
Store at -20°C. Avoid exposure to light. Stable for one year after shipment.

Storage Buffer:
PBS with 50% Glycerol, 0.05% Proclin300, 0.5% BSA, pH 7.3.

Aliquoting is unnecessary for -20°C storage

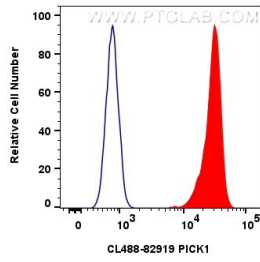
For technical support and original validation data for this product please contact:

T: 1 (888) 4PTGLAB (1-888-478-4522) (toll free
in USA), or 1(312) 455-8498 (outside USA)

E: proteintech@ptglab.com
W: ptglab.com

This product is exclusively available under Proteintech Group brand and is not available to purchase from any other manufacturer.

Selected Validation Data



1x10⁶ SH-SY5Y cells were intracellularly stained with 0.8 ug Coralite® Plus 488 Pick1 Recombinant Antibody (CL488-82919, Clone:230185B8)(red), or 0.8 ug Coralite® Plus 488-conjugated Rabbit IgG control Rabbit PolyAb (CL488-30000) (blue). Cells were fixed with 4% PFA and permeabilized with Flow Cytometry Perm Buffer (PF00011-C).