

For Research Use Only

CoraLite® Plus 488-conjugated MYOF Recombinant antibody

Catalog Number:CL488-82917-7



Basic Information

Catalog Number:

CL488-82917-7

Size:

100ul , Concentration: 1000 ug/ml by
Nanodrop;

Source:

Rabbit

Isotype:

IgG

GenBank Accession Number:

NM_133337

GeneID (NCBI):

26509

UNIPROT ID:

Q9NZM1

Full Name:

myoferlin

Calculated MW:

235 kDa

Purification Method:

Protein A purification

CloneNo.:

230213B6

Recommended Dilutions:

IF/ICC 1:50-1:500

Excitation/Emission maxima
wavelengths:

493 nm / 522 nm

Applications

Tested Applications:

IF/ICC

Species Specificity:

human

Positive Controls:

IF/ICC : HeLa cells,

Background Information

MYOF, also named as FER1L3 and KIAA1207, belongs to the Ferlin family. MYOF is a calcium/phospholipid-binding protein that plays a role in the plasmalemma repair mechanism of endothelial cells that permits rapid resealing of membranes disrupted by mechanical stress. It is involved in endocytic recycling. MYOF is implicated in VEGF signal transduction by regulating the levels of the receptor KDR.

Storage

Storage:

Store at -20°C. Avoid exposure to light. Stable for one year after shipment.

Storage Buffer:

PBS with 50% Glycerol, 0.05% Proclin300, 0.5% BSA, pH 7.3.

Aliquoting is unnecessary for -20°C storage

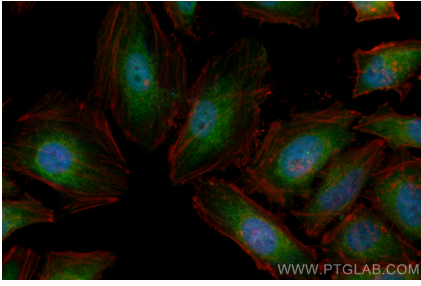
For technical support and original validation data for this product please contact:

T: 1 (888) 4PTGLAB (1-888-478-4522) (toll free
in USA), or 1(312) 455-8498 (outside USA)

E: proteintech@ptglab.com
W: ptglab.com

This product is exclusively available under Proteintech Group brand and is not available to purchase from any other manufacturer.

Selected Validation Data



Immunofluorescent analysis of (4% PFA) fixed HeLa cells using CoraLite® Plus 488 MYOF antibody (CL488-82917-7, Clone: 230213B6) at dilution of 1:200.