

For Research Use Only

CoraLite® Plus 488-conjugated ZC3H11A Recombinant antibody

Catalog Number:CL488-82912-5



Basic Information

Catalog Number:

CL488-82912-5

Size:

100ul , Concentration: 1000 ug/ml by

Nanodrop;

Source:

Rabbit

Isotype:

IgG

Immunogen Catalog Number:

AG23424

GenBank Accession Number:

BC014268

GeneID (NCBI):

9877

UNIPROT ID:

O75152

Full Name:

zinc finger CCCH-type containing 11A

Purification Method:

Protein A purification

CloneNo.:

230191D2

Recommended Dilutions:

IF/ICC 1:50-1:500

Excitation/Emission maxima

wavelengths:

493 nm / 522 nm

Applications

Tested Applications:

IF/ICC, FC (Intra)

Species Specificity:

human

Positive Controls:

IF/ICC : HepG2 cells,

Background Information

ZC3H11A is a RNA-binding protein that interacts with purine-rich sequences and is involved in nuclear mRNA export.

Storage

Storage:

Store at -20°C. Avoid exposure to light. Stable for one year after shipment.

Storage Buffer:

PBS with 50% Glycerol, 0.05% Proclin300, 0.5% BSA, pH 7.3.

Aliquoting is unnecessary for -20°C storage

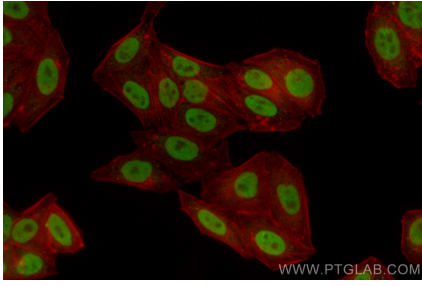
For technical support and original validation data for this product please contact:

T: 1 (888) 4PTGLAB (1-888-478-4522) (toll free
in USA), or 1(312) 455-8498 (outside USA)

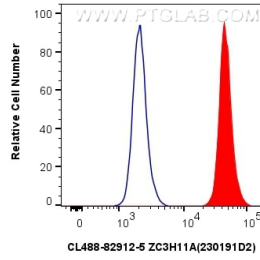
E: proteintech@ptglab.com
W: ptglab.com

This product is exclusively available under Proteintech Group brand and is not available to purchase from any other manufacturer.

Selected Validation Data



Immunofluorescent analysis of (4% PFA) fixed HepG2 cells using CoraLite® Plus 488 ZC3H11A antibody (CL488-82912-5, Clone: 230191D2) at dilution of 1:200.



1x10⁶ HepG2 cells were intracellularly stained with 0.4 ug CoraLite® Plus 488-conjugated ZC3H11A Recombinant antibody (CL488-82912-5, Clone:230191D2)(red), or 0.4 ug CoraLite® Plus 488-conjugated Rabbit IgG control Rabbit PolyAb (CL488-30000) (blue). Cells were fixed and permeabilized with Transcription Factor Staining Buffer Kit (PF00011).