

For Research Use Only

CoraLite® Plus 488-conjugated Synaptophysin Recombinant antibody

Catalog Number:CL488-82900



Basic Information

Catalog Number: CL488-82900	GenBank Accession Number: BC064550	Purification Method: Protein A purification
Size: 100ul , Concentration: 1000 ug/ml by Nanodrop;	GeneID (NCBI): 6855	CloneNo.: 2H14
Source: Rabbit	UNIPROT ID: P08247	Recommended Dilutions: IF-P 1:50-1:500 IF/ICC 1:50-1:500
Isotype: IgG	Full Name: synaptophysin	Excitation/Emission maxima wavelengths: 493 nm / 522 nm
Immunogen Catalog Number: AG11781	Calculated MW: 313 aa, 34 kDa	
	Observed MW: 38-40 kDa	

Applications

Tested Applications: IF/ICC, IF-P	Positive Controls: IF-P : mouse brain tissue, IF/ICC : PC-12 cells,
Species Specificity: human, mouse, rat	

Background Information

Synaptophysin (SYP, also known as major synaptic vesicle protein p38) is a 38-kDa integral membrane glycoprotein that regulates synaptic vesicle endocytosis. It is the most abundant synaptic vesicle protein by mass. Synaptophysin is present in neuroendocrine cells and neurons that participate in synaptic transmission. Synaptophysin is a useful marker for identification of neuroendocrine cells and neoplasms. (PMID: 3010302; 21658579)

Storage

Storage:
Store at -20°C. Avoid exposure to light. Stable for one year after shipment.
Storage Buffer:
PBS with 50% Glycerol, 0.05% Proclin300, 0.5% BSA, pH 7.3.
Aliquoting is unnecessary for -20°C storage

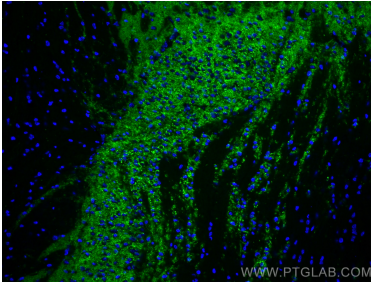
For technical support and original validation data for this product please contact:

T: 1 (888) 4PTGLAB (1-888-478-4522) (toll free
in USA), or 1(312) 455-8498 (outside USA)

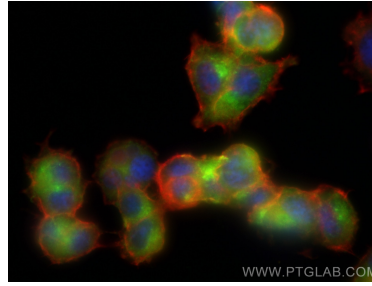
E: proteintech@ptglab.com
W: ptglab.com

This product is exclusively available under Proteintech Group brand and is not available to purchase from any other manufacturer.

Selected Validation Data



Immunofluorescent analysis of (4% PFA) fixed paraffin-embedded mouse brain tissue using CoraLite® Plus 488 Synaptophysin antibody (CL488-82900, Clone: 2H14) at dilution of 1:200, Histone H3 antibody (68345-1-Ig, Clone: 1A2A3, blue). Heat mediated antigen retrieval with Tris-EDTA buffer (pH 9.0).



Immunofluorescent analysis of (-20°C Ethanol) fixed PC-12 cells using CoraLite® Plus 488 Synaptophysin antibody (CL488-82900, Clone: 2H14) at dilution of 1:200, CL594-Phalloidin (red).