

For Research Use Only

CoraLite® Plus 488-conjugated Emerin Recombinant antibody

Catalog Number: CL488-82888-2



Basic Information

Catalog Number:

CL488-82888-2

Size:

100ul , Concentration: 1000 ug/ml by
Nanodrop;

Source:

Rabbit

Isotype:

IgG

Immunogen Catalog Number:

AG0236

GenBank Accession Number:

BC000738

GeneID (NCBI):

2010

UNIPROT ID:

P50402

Full Name:

emerin

Calculated MW:

34 kDa

Purification Method:

Protein A purification

CloneNo.:

230089C4

Recommended Dilutions:

IF/ICC 1:50-1:500

Excitation/Emission maxima
wavelengths:

493 nm / 522 nm

Applications

Tested Applications:

IF/ICC

Species Specificity:

human

Positive Controls:

IF/ICC : HeLa cells,

Storage

Storage:

Store at -20°C. Avoid exposure to light. Stable for one year after shipment.

Storage Buffer:

PBS with 50% Glycerol, 0.05% Proclin300, 0.5% BSA, pH 7.3.

Aliquoting is unnecessary for -20°C storage

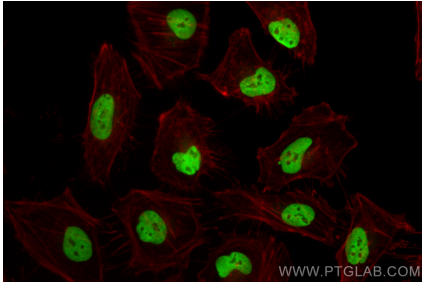
For technical support and original validation data for this product please contact:

T: 1 (888) 4PTGLAB (1-888-478-4522) (toll free
in USA), or 1(312) 455-8498 (outside USA)

E: proteintech@ptglab.com
W: ptglab.com

This product is exclusively available under Proteintech Group brand and is not available to purchase from any other manufacturer.

Selected Validation Data



Immunofluorescent analysis of (4% PFA) fixed HeLa cells using CoraLite® Plus 488 Emerin antibody (CL488-82888-2, Clone: 230089C4) at dilution of 1:200.