

For Research Use Only

# CoraLite® Plus 488-conjugated TAF15 Recombinant antibody

Catalog Number: CL488-82860

Featured Product



## Basic Information

Catalog Number:

CL488-82860

Size:

100ul, Concentration: 1000 µg/ml by  
Nanodrop;

Source:

Rabbit

Isotype:

IgG

Immunogen Catalog Number:

AG20828

GenBank Accession Number:

BC046099

GeneID (NCBI):

8148

UNIPROT ID:

Q92804

Full Name:

TAF15 RNA polymerase II, TATA box  
binding protein (TBP)-associated  
factor, 68kDa

Calculated MW:

592 aa, 62 kDa

Observed MW:

62-75 kDa

Purification Method:

Protein A purification

CloneNo.:

3L13

Recommended Dilutions:

IF/ICC 1:50-1:500

Excitation/Emission maxima  
wavelengths:

493 nm / 522 nm

## Applications

Tested Applications:

IF/ICC

Species Specificity:

human, mouse, rat

Positive Controls:

IF/ICC : HeLa cells,

## Background Information

TAF15 (TAF2N or TAFII68) is a nuclear protein known to associate with a distinct subpopulation of transcription factor IID (TFIID), a multi-subunit complex that nucleates the pre-initiation complex on promoters of protein-coding genes. TAF15 harbors a transcriptional activation domain, a RNA recognition motif and many Arg-Gly-Gly repeats that participate in RNA binding. TAF15 along with FUS and EWS constitutes the FET (FUS/EWS/TAF15) protein family of heterogeneous nuclear ribonucleoproteins (hnRNPs) class of RNA binding proteins that are multifunctional proteins implicated in numerous aspects of RNA processing/functions. TAF15 is a nuclear protein that shuttle between cytoplasm-nucleus and as RNA/ssDNA-binding protein, it play specific roles during transcription initiation at distinct promoters and enter the preinitiation complex together with the RNA polymerase II. TAF15 as well as other FET member genes are frequently translocated in sarcomas and rare hematopoietic as well as epithelial cancers. Moreover, dominant mutations in genes coding for four hnRNPs (TDP-43, FUS/TLS, TAF15, and EWS) are found in familial and sporadic cases of ALS and a chromosomal aberration involving TAF15/TAF2N is found in a form of extraskeletal myxoid chondrosarcomas (EMC).

## Storage

Storage:

Store at -20°C. Avoid exposure to light. Stable for one year after shipment.

Storage Buffer:

PBS with 50% Glycerol, 0.05% Proclin300, 0.5% BSA, pH 7.3.

Aliquoting is unnecessary for -20°C storage

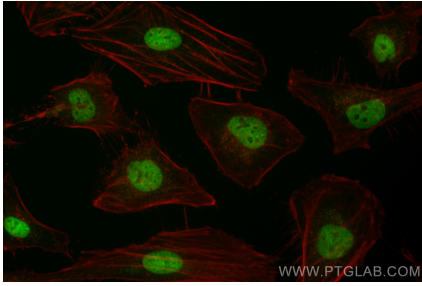
For technical support and original validation data for this product please contact:

T: 1 (888) 4PTGLAB (1-888-478-4522) (toll free  
in USA), or 1(312) 455-8498 (outside USA)

E: [proteintech@ptglab.com](mailto:proteintech@ptglab.com)  
W: [ptglab.com](http://ptglab.com)

This product is exclusively available under Proteintech Group brand and is not available to purchase from any other manufacturer.

## Selected Validation Data



Immunofluorescent analysis of (4% PFA) fixed HeLa cells using CoraLite® Plus 488 TAF15 antibody (CL488-82860, Clone: 3L13 ) at dilution of 1:200.