

For Research Use Only

CoraLite® Plus 488-conjugated CISD2 Recombinant antibody

Catalog Number:CL488-82802-10



Basic Information

Catalog Number: CL488-82802-10	GenBank Accession Number: BC032300	Purification Method: Protein A purification
Size: 100ul , Concentration: 1000 ug/ml by Nanodrop;	GeneID (NCBI): 493856	CloneNo.: 6H13
Source: Rabbit	UNIPROT ID: Q8N5K1	Recommended Dilutions: IF/ICC 1:50-1:500
Isotype: IgG	Full Name: CDGSH iron sulfur domain 2	Excitation/Emission maxima wavelengths: 493 nm / 522 nm
Immunogen Catalog Number: AG4172	Calculated MW: 135 aa, 15 kDa	
	Observed MW: 15 kDa	

Applications

Tested Applications: IF/ICC	Positive Controls: IF/ICC : HepG2 cells,
Species Specificity: human, mouse	

Background Information

CISD2 gene encodes a 15 kDa CDGSH iron-sulfur domain-containing protein 2, which is also named Miner1 or NAF-1, this protein was reported on endoplasmic reticulum membrane or mitochondrion outer membrane. Defects in CISD2 are the cause of Wolfram syndrome type 2 (WFS2), a rare disorder characterized by juvenile-onset insulin-dependent diabetes mellitus with optic atrophy. CISD2 regulates autophagy program by interacting BCL2, contributing to antagonize BECN1-mediated cellular autophagy at the endoplasmic reticulum.

Storage

Storage:
Store at -20°C. Avoid exposure to light. Stable for one year after shipment.
Storage Buffer:
PBS with 50% Glycerol, 0.05% Proclin300, 0.5% BSA, pH 7.3.
Aliquoting is unnecessary for -20°C storage

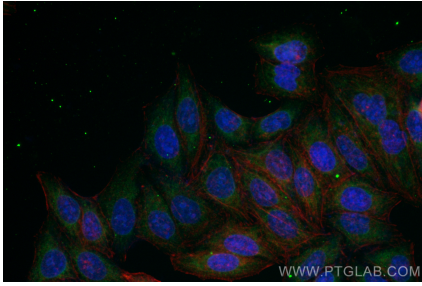
For technical support and original validation data for this product please contact:

T: 1 (888) 4PTGLAB (1-888-478-4522) (toll free
in USA), or 1(312) 455-8498 (outside USA)

E: proteintech@ptglab.com
W: ptglab.com

This product is exclusively available under Proteintech Group brand and is not available to purchase from any other manufacturer.

Selected Validation Data



Immunofluorescent analysis of (-20°C Acetone) fixed HepG2 cells using CoraLite® Plus 488 CISD2 antibody (CL488-82802-10, Clone: 6H13) at dilution of 1:200.