

For Research Use Only

CoraLite® Plus 488-conjugated Cyclin E1 Recombinant antibody

Catalog Number:CL488-82700-8



Basic Information

Catalog Number: CL488-82700-8	GenBank Accession Number: BC035498	Purification Method: Protein A purification
Size: 100ul , Concentration: 1000 µg/ml by Nanodrop;	GeneID (NCBI): 898	CloneNo.: 240136G9
Source: Rabbit	UNIPROT ID: P24864	Recommended Dilutions: IF/ICC 1:50-1:500
Isotype: IgG	Full Name: cyclin E1	Excitation/Emission maxima wavelengths: 493 nm / 522 nm
Immunogen Catalog Number: AG2110	Calculated MW: 410 aa, 47 kDa	
	Observed MW: 47 kDa	

Applications

Tested Applications: IF/ICC, FC (Intra)	Positive Controls: IF/ICC : HepG2 cells,
Species Specificity: human	

Background Information

Cyclin E1 (CCNE1) is a member of the highly conserved cyclin family, whose members are characterized by a dramatic periodicity in protein abundance through the cell cycle. CCNE1, an essential cyclin activating Cdk2, regulates the G1-S phase transition of the mammalian cell division cycle. Its timing expression plays a direct role in the initiation of DNA replication, the control of histone biosynthesis, and the centrosome cycle. CCNE1 is associated with disease progression in various malignancies and is associated clinically with poor prognosis. Two bands of Cyclin E1 were expressed in U2OS and MDA-MB-231 cells (PMID:9858585, PMID: 24112607).

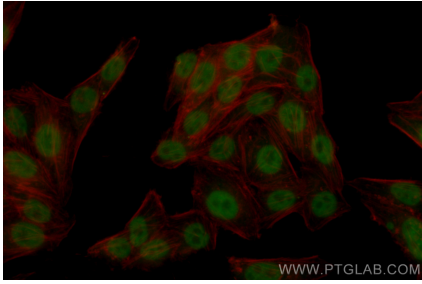
Storage

Storage:
Store at -20°C. Avoid exposure to light. Stable for one year after shipment.
Storage Buffer:
PBS with 50% Glycerol, 0.05% Proclin300, 0.5% BSA, pH 7.3.
Aliquoting is unnecessary for -20°C storage

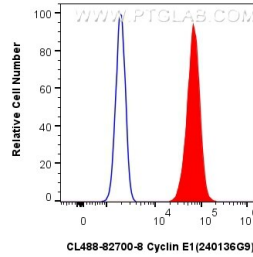
For technical support and original validation data for this product please contact:
T: 1 (888) 4PTGLAB (1-888-478-4522) (toll free in USA), or 1(312) 455-8498 (outside USA)
E: proteintech@ptglab.com
W: ptglab.com

This product is exclusively available under Proteintech Group brand and is not available to purchase from any other manufacturer.

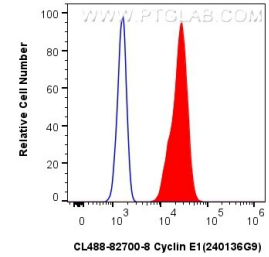
Selected Validation Data



Immunofluorescent analysis of (4% PFA) fixed HepG2 cells using CoraLite® Plus 488 Cyclin E antibody (CL488-82700-8, Clone: 240136G9) at dilution of 1:200.



1x10⁶ HeLa cells were intracellularly stained with 0.4 ug CoraLite® Plus 488-conjugated Cyclin E1 Recombinant antibody (CL488-82700-8, Clone:240136G9)(red), or 0.4 ug CoraLite® Plus 488-conjugated Rabbit IgG control Rabbit PolyAb (CL488-30000) (blue). Cells were fixed and permeabilized with Transcription Factor Staining Buffer Kit (PF00011).



1x10⁶ MCF-7 cells were intracellularly stained with 0.4 ug CoraLite® Plus 488-conjugated Cyclin E1 Recombinant antibody (CL488-82700-8, Clone:240136G9)(red), or 0.4 ug CoraLite® Plus 488-conjugated Rabbit IgG control Rabbit PolyAb (CL488-30000) (blue). Cells were fixed and permeabilized with Transcription Factor Staining Buffer Kit (PF00011).