

For Research Use Only

# CoraLite® Plus 488-conjugated G3BP2 Recombinant antibody

Catalog Number:CL488-82080-4



## Basic Information

<b>Catalog Number:</b> CL488-82080-4	<b>GenBank Accession Number:</b> BC011731	<b>Purification Method:</b> Protein A purification
<b>Size:</b> 100ul , Concentration: 1000 ug/ml by Nanodrop;	<b>GeneID (NCBI):</b> 9908	<b>CloneNo.:</b> 230275D6
<b>Source:</b> Rabbit	<b>UNIPROT ID:</b> Q9UN86	<b>Recommended Dilutions:</b> IF/ICC 1:50-1:500
<b>Isotype:</b> IgG	<b>Full Name:</b> GTPase activating protein (SH3 domain) binding protein 2	<b>Excitation/Emission maxima wavelengths:</b> 493 nm / 522 nm
<b>Immunogen Catalog Number:</b> AG9355	<b>Calculated MW:</b> 482aa,54 kDa; 449aa,51 kDa	
	<b>Observed MW:</b> 65-70 kDa	

## Applications

<b>Tested Applications:</b> IF/ICC, FC (Intra)	<b>Positive Controls:</b> IF/ICC : sodium arsenite treated HeLa cells,
<b>Species Specificity:</b> human	

## Background Information

Stress granules (SGs) are cytoplasmic mRNA-protein condensates formed in response to cellular stressors, such as oxidative stress, ultraviolet radiation, and viral infection (1). The Ras-GTPase-activating protein-binding proteins (G3BPs), consisting of G3BP1 and G3BP2, are key nucleating factors essential for SG formation. They function to protect RNAs from harmful conditions. G3BP2 is mainly distributed in the cytoplasm and participates in the formation of stress granules, cell differentiation, proliferation, and signal transduction. Accumulating evidence has demonstrated that aberrant expression of G3BP2 contributes to cancer initiation and progression, such as high expression of G3BP2 increasing cell stemness, metastasis and chemoresistance in breast cancer.

## Storage

**Storage:**  
Store at -20°C. Avoid exposure to light. Stable for one year after shipment.  
**Storage Buffer:**  
PBS with 50% Glycerol, 0.05% Proclin300, 0.5% BSA, pH 7.3.  
Aliquoting is unnecessary for -20°C storage

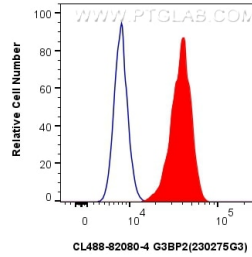
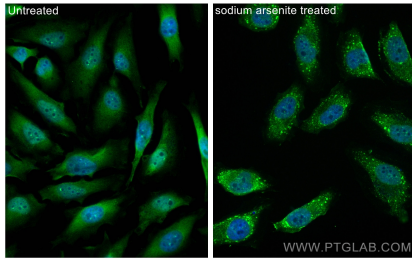
For technical support and original validation data for this product please contact:

T: 1 (888) 4PTGLAB (1-888-478-4522) (toll free  
in USA), or 1(312) 455-8498 (outside USA)

E: proteintech@ptglab.com  
W: ptglab.com

**This product is exclusively available under Proteintech Group brand and is not available to purchase from any other manufacturer.**

## Selected Validation Data



Immunofluorescent analysis of (4% PFA) fixed sodium arsenite treated HeLa cells using CoraLite® Plus 488 G3BP2 antibody (CL488-82080-4, Clone: 230275D6) at dilution of 1:200.

$1 \times 10^6$  U-2 OS were intracellularly stained with 0.8 ug CoraLite® Plus 488-conjugated G3BP2 Recombinant antibody (CL488-82080-4, Clone:230275D6)(red), or 0.8 ug CoraLite® Plus 488-conjugated Rabbit IgG control Rabbit PolyAb (CL488-30000) (blue). Cells were fixed with 4% PFA and permeabilized with Flow Cytometry Perm Buffer (PF00011-C).