

For Research Use Only

CoraLite® Plus 488-conjugated Phospho-CHEK2 (Thr68) Recombinant antibody

Catalog Number: CL488-81740



Basic Information

Catalog Number: CL488-81740	GenBank Accession Number: BC004207	Purification Method: Protein A purification
Size: 100ul , Concentration: 1000 ug/ml by Nanodrop;	GeneID (NCBI): 11200	CloneNo.: 1L2
Source: Rabbit	UNIPROT ID: O96017	Excitation/Emission maxima wavelengths: 493 nm / 522 nm
Isotype: IgG	Full Name: CHK2 checkpoint homolog (S. pombe)	
	Calculated MW: 61 kDa	
	Observed MW: 65 kDa	

Applications

Tested Applications:
FC (Intra)

Species Specificity:
human

Background Information

Serine/threonine-protein kinase Chk2 (CHEK2) is a serine/threonine kinase which is activated upon DNA damage and is implicated in pathways that govern DNA repair, cell cycle arrest or apoptosis in response to the initial damage. ATM phosphorylates CHEK2 on T68. Phosphorylation on T68 and subsequent full activation of CHEK2 was shown to require priming phosphorylation on adjacent residues by Polo-like kinase 3 (PLK3) and the dualspecificity tyrosine and serine/threoninekinase TTK/hMPS1. Additionally TTK appears to phosphorylate T68. Phosphorylation of T68 promotes the binding of the N-terminal SQ/TQ-rich cluster of one CHEK2 molecule with the FHA domain of another CHEK2 molecule. (PMID: 28553140, PMID: 18004398, PMID: 33322746)

Storage

Storage:
Store at -20°C. Avoid exposure to light. Stable for one year after shipment.

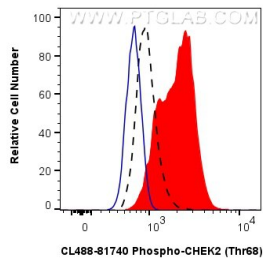
Storage Buffer:
PBS with 50% Glycerol, 0.05% Proclin300, 0.5% BSA, pH 7.3.

Aliquoting is unnecessary for -20°C storage

For technical support and original validation data for this product please contact:
T: 1 (888) 4PTGLAB (1-888-478-4522) (toll free in USA), or 1(312) 455-8498 (outside USA) E: proteintech@ptglab.com
W: ptglab.com

This product is exclusively available under Proteintech Group brand and is not available to purchase from any other manufacturer.

Selected Validation Data



1X10⁶ PC-3 cells untreated (dashed lines) or treated with MMS which intracellularly stained with 0.25 ug Coralite® Plus 488 Phospho-Chek2 (Thr68) Recombinant Antibody (CL488-81740, Clone:1L2)(red), or 0.25 ug Coralite® Plus 488 Rabbit IgG Isotype Control RecAb (CL488-98136, Clone: 240953C9) (blue). Cells were fixed with 4% PFA and permeabilized with 90% MeOH.