

For Research Use Only

CoraLite® Plus 488-conjugated Occludin Recombinant antibody



Catalog Number: CL488-80545

Basic Information

Catalog Number: CL488-80545	GenBank Accession Number: BC029886	Purification Method: Protein A purification
Size: 100ul , Concentration: 1000 µg/ml by Nanodrop;	GeneID (NCBI): 4950	CloneNo.: 8B2
Source: Rabbit	UNIPROT ID: Q16625	Recommended Dilutions: IF 1:50-1:500
Isotype: IgG	Full Name: occludin	Excitation/Emission maxima wavelengths: 493 nm / 522 nm
Immunogen Catalog Number: AG26173	Calculated MW: 522 aa, 59 kDa	
	Observed MW: 59 kDa	

Applications

Tested Applications: IF	Positive Controls: IF : MCF-7 cells,
Species Specificity: Human, Mouse, Pig	

Background Information

Occludin is an integral membrane protein located at the tight junction. It is a tetraspanin protein with four transmembrane domains, intracellular N and C termini and two extracellular loops. Occludin plays a role in the formation and regulation of the tight junction paracellular permeability barrier. Occludin can exist in different isoforms, owing to modifications at the posttranscriptional and posttranslational levels, the monomeric occludin migrates as 53-65 kDa on SDS-PAGE (PMID: 22083955; 19457074).

Storage

Storage:
Store at -20°C. Avoid exposure to light. Stable for one year after shipment.
Storage Buffer:
PBS with 50% Glycerol, 0.05% Proclin300, 0.5% BSA, pH 7.3.
Aliquoting is unnecessary for -20°C storage

*** 20ul sizes contain 0.1% BSA

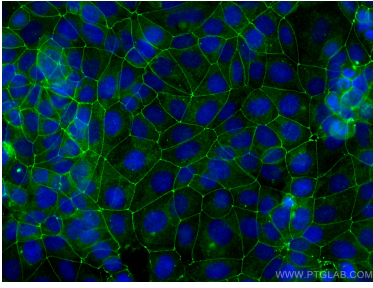
For technical support and original validation data for this product please contact:

T: 1 (888) 4PTGLAB (1-888-478-4522) (toll free in USA), or 1(312) 455-8498 (outside USA)

E: proteintech@ptglab.com
W: ptglab.com

This product is exclusively available under Proteintech Group brand and is not available to purchase from any other manufacturer.

Selected Validation Data



Immunofluorescent analysis of (-20°C Methanol) fixed MCF-7 cells using CoraLite® Plus 488 Occludin antibody (CL488-80545, Clone: 8B2) at dilution of 1:200.