

For Research Use Only

CoraLite® Plus 488-conjugated E-cadherin Recombinant antibody

Catalog Number:CL488-80541-5



Basic Information

Catalog Number: CL488-80541-5	GenBank Accession Number: BC141838	Purification Method: Protein A purification
Size: 100ul , Concentration: 1000 ug/ml by Nanodrop;	GeneID (NCBI): 999	CloneNo.: 240159C10
Source: Rabbit	UNIPROT ID: P12830	Recommended Dilutions: IF/ICC 1:50-1:500
Isotype: IgG	Full Name: cadherin 1, type 1, E-cadherin (epithelial)	Excitation/Emission maxima wavelengths: 493 nm / 522 nm
Immunogen Catalog Number: AG14973	Calculated MW: 882 aa, 97 kDa	
	Observed MW: 135 kDa	

Applications

Tested Applications: IF/ICC	Positive Controls: IF/ICC : MCF-7 cells,
Species Specificity: human	

Background Information

Cadherins are a family of transmembrane glycoproteins that mediate calcium-dependent cell-cell adhesion and play an important role in the maintenance of normal tissue architecture. E-cadherin (epithelial cadherin), also known as CDH1 (cadherin 1) or CAM 120/80, is a classical member of the cadherin superfamily which also include N-, P-, R-, and B-cadherins. E-cadherin is expressed on the cell surface in most epithelial tissues. The extracellular region of E-cadherin establishes calcium-dependent homophilic trans binding, providing specific interaction with adjacent cells, while the cytoplasmic domain is connected to the actin cytoskeleton through the interaction with p120-, α -, β -, and γ -catenin (plakoglobin). E-cadherin is important in the maintenance of the epithelial integrity, and is involved in mechanisms regulating proliferation, differentiation, and survival of epithelial cell. E-cadherin may also play a role in tumorigenesis. It is considered to be an invasion suppressor protein and its loss is an indicator of high tumor aggressiveness.

Storage

Storage:
Store at -20°C. Avoid exposure to light. Stable for one year after shipment.
Storage Buffer:
PBS with 50% Glycerol, 0.05% Proclin300, 0.5% BSA, pH 7.3.
Aliquoting is unnecessary for -20°C storage

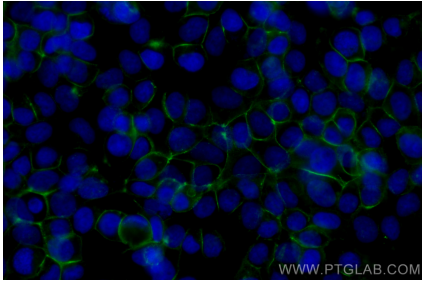
For technical support and original validation data for this product please contact:

T: 1 (888) 4PTGLAB (1-888-478-4522) (toll free in USA), or 1(312) 455-8498 (outside USA)

E: proteintech@ptglab.com
W: ptglab.com

This product is exclusively available under Proteintech Group brand and is not available to purchase from any other manufacturer.

Selected Validation Data



Immunofluorescent analysis of (4% PFA) fixed MCF-7 cells using CoraLite® Plus 488 E-cadherin antibody (CL488-80541-5, Clone: 240159C10) at dilution of 1:200.