

For Research Use Only

CoraLite® Plus 488-conjugated CD31 Recombinant antibody

Catalog Number:CL488-80530



Basic Information

Catalog Number: CL488-80530	GenBank Accession Number: BC022512	Purification Method: Protein A purification
Size: 100ul , Concentration: 1000 ug/ml by Nanodrop;	GeneID (NCBI): 5175	CloneNo.: 4N13
Source: Rabbit	ENSEMBL Gene ID: ENSG00000261371	Recommended Dilutions: IF/ICC 1:50-1:500
Isotype: IgG	UNIPROT ID: P16284	Excitation/Emission maxima wavelengths: 493 nm / 522 nm
Immunogen Catalog Number: AG1787	Full Name: platelet/endothelial cell adhesion molecule	
	Calculated MW: 83 kDa	
	Observed MW: 130 kDa	

Applications

Tested Applications: IF/ICC	Positive Controls: IF/ICC : HUVEC cells,
Species Specificity: human, mouse	

Background Information

Platelet endothelial cell adhesion molecule-1 (PECAM-1, CD31) is a member of the immunoglobulin gene superfamily of cell adhesion molecules. CD31 is a transmembrane glycoprotein that is highly expressed on the surface of the endothelium, making up a large portion of its intracellular junctions. PECAM-1 is also present on the surface of hematopoietic cells and immune cells including platelets, monocytes, neutrophils, natural killer cells, megakaryocytes and some types of T-cell (PMID: 9011572). As well as its role in cell-cell adhesion, PECAM-1 functions as a signaling receptor, and is involved in important physiological events such as nitric oxide production, regulation of T-cell immunity and tolerance, leukocyte transendothelial migration and inflammation and angiogenesis (PMID: 21183735; 20978210; 17872453; 20634489).

Storage

Storage:
Store at -20°C. Avoid exposure to light. Stable for one year after shipment.
Storage Buffer:
PBS with 50% Glycerol, 0.05% Proclin300, 0.5% BSA, pH 7.3.
Aliquoting is unnecessary for -20°C storage

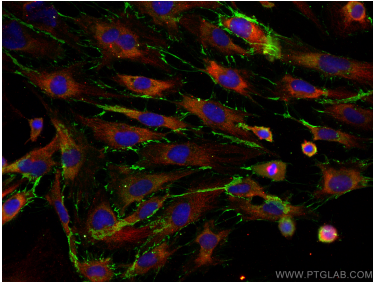
For technical support and original validation data for this product please contact:

T: 1 (888) 4PTGLAB (1-888-478-4522) (toll free
in USA), or 1(312) 455-8498 (outside USA)

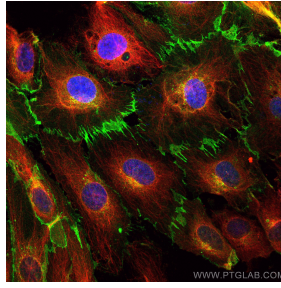
E: proteintech@ptglab.com
W: ptglab.com

This product is exclusively available under Proteintech Group brand and is not available to purchase from any other manufacturer.

Selected Validation Data



Immunofluorescent analysis of (-20°C Ethanol) fixed HUVEC cells using CoraLite® Plus 488 CD31 antibody (CL488-80530, Clone: 4N13) at dilution of 1:100, Alpha Tubulin antibody (66031-1-Ig, Clone: 1E4C11, red).



Immunofluorescent analysis of (4% PFA) fixed HUVEC cells using CoraLite® Plus 488 CD31 antibody (CL488-80530, Clone: 4N13) at dilution of 1:100, Alpha Tubulin antibody (66031-1-Ig, Clone: 1E4C11, red).