

For Research Use Only

CoraLite® Plus 488-conjugated Chk1 Recombinant antibody

Catalog Number:CL488-80056-2



Basic Information

| | | |
|--|---|---|
| Catalog Number: CL488-80056-2 | GenBank Accession Number: BC004202 | Purification Method: Protein A purification |
| Size: 100ul , Concentration: 1000 ug/ml by Nanodrop; | GeneID (NCBI): 1111 | CloneNo.: 2G7 |
| Source: Rabbit | UNIPROT ID: O14757 | Recommended Dilutions: IF/ICC 1:50-1:500 |
| Isotype: IgG | Full Name: CHK1 checkpoint homolog (S. pombe) | Excitation/Emission maxima wavelengths: 493 nm / 522 nm |
| | Calculated MW: 54 kDa | |
| | Observed MW: 55 kDa | |

Applications

| | |
|---|---|
| Tested Applications: IF/ICC, FC (Intra) | Positive Controls: IF/ICC : HeLa cells, |
| Species Specificity: human, mouse, rat | |

Background Information

CHEK1(Checkpoint kinase-1) is also named as CHK1 and belongs to the protein kinase superfamily. It is implicated in a circuit in which it activates checkpoints, DNA repair and proliferating cell nuclear antigen and FANCD2 monoubiquitinylation(PMID:21389083). CHEK1 protects vertebrate cells against spontaneous chromosome missegregation and is required to sustain anaphase delay when spindle function is disrupted by taxol(PMID:17276342). It has 3 isoforms produced by alternative splicing with the molecular mass of 54 kDa, 44 kDa and 50 kDa.

Storage

Storage:
Store at -20°C. Avoid exposure to light. Stable for one year after shipment.
Storage Buffer:
PBS with 50% Glycerol, 0.05% Proclin300, 0.5% BSA, pH 7.3.
Aliquoting is unnecessary for -20°C storage

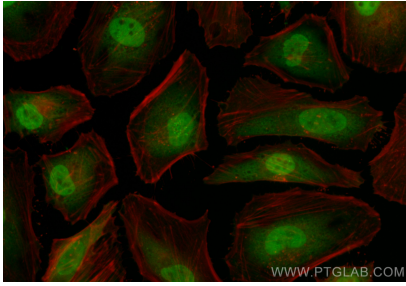
For technical support and original validation data for this product please contact:

T: 1 (888) 4PTGLAB (1-888-478-4522) (toll free in USA), or 1(312) 455-8498 (outside USA)

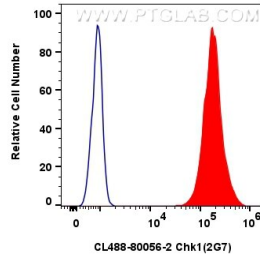
E: proteintech@ptglab.com
W: ptglab.com

This product is exclusively available under Proteintech Group brand and is not available to purchase from any other manufacturer.

Selected Validation Data



Immunofluorescent analysis of (4% PFA) fixed HeLa cells using CoraLite® Plus 488 Chk1 antibody (CL488-80056-2, Clone: 2G7) at dilution of 1:200.



1×10^6 HEK-293T cells were intracellularly stained with 0.4 μ g CoraLite® Plus 488-conjugated Chk1 Recombinant antibody (CL488-80056-2, Clone: 2G7) (red), or 0.4 μ g CoraLite® Plus 488-conjugated Rabbit IgG control Rabbit PolyAb (CL488-30000) (blue). Cells were fixed and permeabilized with Transcription Factor Staining Buffer Kit (PF00011).