

For Research Use Only

CoraLite® Plus 488-conjugated GIMAP7 Monoclonal antibody

Catalog Number:CL488-68451



Basic Information

Catalog Number: CL488-68451	GenBank Accession Number: BC027613	Purification Method: Protein G purification
Size: 100ul , Concentration: 1000 ug/ml by Nanodrop;	GeneID (NCBI): 168537	CloneNo.: 3E4A6
Source: Mouse	UNIPROT ID: Q8NHV1	Recommended Dilutions: IF/ICC 1:50-1:500
Isotype: IgG1	Full Name: GTPase, IMAP family member 7	Excitation/Emission maxima wavelengths: 493 nm / 522 nm
Immunogen Catalog Number: AG10740	Calculated MW: 300 aa, 35 kDa	
	Observed MW: 34 kDa	

Applications

Tested Applications: IF/ICC	Positive Controls: IF/ICC : HepG2 cells,
Species Specificity: human	

Background Information

GIMAP7, also known as hIAN7 or IAN 7, is a transmembrane protein located in the endoplasmic reticulum and Golgi apparatus. GIMAP7 can promote oxidative stress and apoptosis in ovarian granulosa cells in Polycystic ovary syndrome by inhibiting the SHH signalling pathway(PMID: 36581994). The MW of this protein is 34 kDa, and this antibody specially recognises the 34 kDa protein.

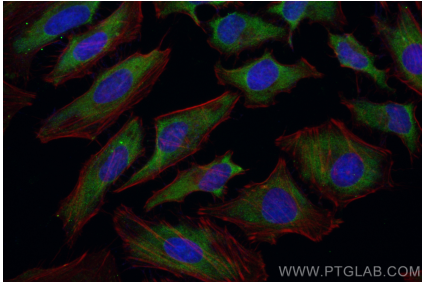
Storage

Storage:
Store at -20°C. Avoid exposure to light. Stable for one year after shipment.
Storage Buffer:
PBS with 50% Glycerol, 0.05% Proclin300, 0.5% BSA, pH 7.3.
Aliquoting is unnecessary for -20°C storage

For technical support and original validation data for this product please contact:
T: 1 (888) 4PTGLAB (1-888-478-4522) (toll free in USA), or 1(312) 455-8498 (outside USA)
E: proteintech@ptglab.com
W: ptglab.com

This product is exclusively available under Proteintech Group brand and is not available to purchase from any other manufacturer.

Selected Validation Data



Immunofluorescent analysis of (-20°C Ethanol)
fixed HepG2 cells using CoraLite® Plus 488
GIMAP7 antibody (CL488-68451, Clone: 3E4A6) at
dilution of 1:200.