

For Research Use Only

CoraLite® Plus 488-conjugated OTUD6B Monoclonal antibody

Catalog Number:CL488-68450



Basic Information

Catalog Number:

CL488-68450

Size:

100ul , Concentration: 1000 ug/ml by
Nanodrop;

Source:

Mouse

Isotype:

IgG1

Immunogen Catalog Number:

AG33607

GenBank Accession Number:

BC029760

GeneID (NCBI):

51633

UNIPROT ID:

Q8N6M0

Full Name:

OTU domain containing 6B

Calculated MW:

293 aa, 34 kDa

Observed MW:

34-40 kDa

Purification Method:

Protein G purification

CloneNo.:

1D1G1

Recommended Dilutions:

IF/ICC 1:50-1:500

**Excitation/Emission maxima
wavelengths:**

493 nm / 522 nm

Applications

Tested Applications:

IF/ICC

Species Specificity:

human, mouse, rat

Positive Controls:

IF/ICC : PC-3 cells,

Background Information

OTUD6B, also known as DUBA5, belongs to a DUB subfamily characterized by an ovarian tumor domain (OTU). It's a functional deubiquitinating enzyme, a class of protease that specifically cleaves ubiquitin linkages. OTUD6B function may be connected to growth and proliferation. It has been reported that OTUD6B could significantly suppress HCC cells migration and metastasis. The calculated molecular weight of OTUD6B is 34 kDa, 68450-1-Ig can detect the band around 34 kDa.(PMID:32323143)

Storage

Storage:

Store at -20°C. Avoid exposure to light. Stable for one year after shipment.

Storage Buffer:

PBS with 50% Glycerol, 0.05% Proclin300, 0.5% BSA, pH 7.3.

Aliquoting is unnecessary for -20°C storage

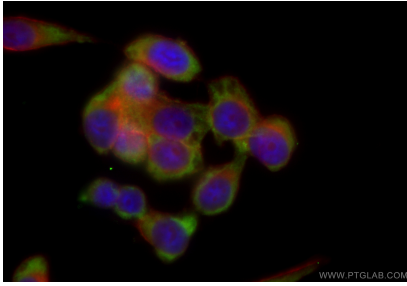
For technical support and original validation data for this product please contact:

T: 1 (888) 4PTGLAB (1-888-478-4522) (toll free
in USA), or 1(312) 455-8498 (outside USA)

E: proteintech@ptglab.com
W: ptglab.com

This product is exclusively available under Proteintech Group brand and is not available to purchase from any other manufacturer.

Selected Validation Data



Immunofluorescent analysis of (-20°C Ethanol) fixed PC-3 cells using CoraLite® Plus 488 OTUD6B antibody (CL488-68450, Clone: 1D1G1) at dilution of 1:200, CL594-Phalloidin (red).