

For Research Use Only

# CoraLite® Plus 488-conjugated TSC2 Monoclonal antibody



Catalog Number: CL488-68380

## Basic Information

<b>Catalog Number:</b> CL488-68380	<b>GenBank Accession Number:</b> BC150300	<b>Purification Method:</b> Protein G purification
<b>Size:</b> 100ul , Concentration: 1000 µg/ml by Nanodrop;	<b>GeneID (NCBI):</b> 7249	<b>CloneNo.:</b> 1A10B2
<b>Source:</b> Mouse	<b>UNIPROT ID:</b> P49815	<b>Recommended Dilutions:</b> IF/ICC 1:50-1:500
<b>Isotype:</b> IgG1	<b>Full Name:</b> tuberous sclerosis 2	<b>Excitation/Emission maxima wavelengths:</b> 493 nm / 522 nm
	<b>Calculated MW:</b> 1807 aa, 201 kDa	
	<b>Observed MW:</b> 200 kDa	

## Applications

<b>Tested Applications:</b> IF/ICC, FC (Intra)	<b>Positive Controls:</b> IF/ICC : HEK-293 cells,
<b>Species Specificity:</b> human, mouse	

## Background Information

TSC2, also named Tuberin, plays an essential role in the cellular energy response pathway. TSC2 forms a physical and functional complex with TSC1 that can inhibit the nutrient-mediated or growth factor-stimulated phosphorylation of S6K1 and EIF4EBP1 by negatively regulating mTORC1 signaling.

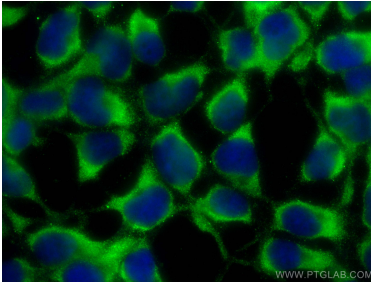
## Storage

**Storage:**  
Store at -20°C. Avoid exposure to light. Stable for one year after shipment.  
**Storage Buffer:**  
PBS with 50% Glycerol, 0.05% Proclin300, 0.5% BSA, pH 7.3.  
**Aliquoting is unnecessary for -20°C storage**

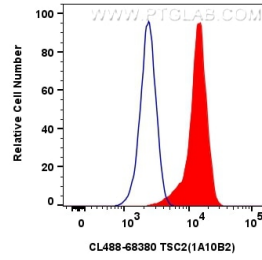
For technical support and original validation data for this product please contact:  
T: 1 (888) 4PTGLAB (1-888-478-4522) (toll free in USA), or 1(312) 455-8498 (outside USA)  
E: proteintech@ptglab.com  
W: ptglab.com

This product is exclusively available under Proteintech Group brand and is not available to purchase from any other manufacturer.

## Selected Validation Data



Immunofluorescent analysis of (-20°C Ethanol) fixed HEK-293 cells using CoraLite® Plus 488 TSC2 antibody (CL488-68380, Clone: 1A10B2) at dilution of 1:200.



1x10<sup>6</sup> HEK-293 cells were intracellularly stained with 0.8 ug CoraLite® Plus 488 Anti-Human TSC2 (CL488-68380, Clone:1A10B2)(red), or 0.8 ug CoraLite® Plus 488 Mouse IgG1 Isotype Control (MOPC-21) (CL488-65124, Clone: MOPC-21) (blue). Cells were fixed with 4% PFA and permeabilized with Flow Cytometry Perm Buffer (PF00011-C).