

For Research Use Only

# CoraLite® Plus 488-conjugated DSP Monoclonal antibody



Catalog Number: CL488-68364

## Basic Information

Catalog Number:

CL488-68364

Size:

100ul , Concentration: 1000 µg/ml by  
Nanodrop;

Source:

Mouse

Isotype:

IgG1

Immunogen Catalog Number:

AG30499

GenBank Accession Number:

BC140802

GeneID (NCBI):

1832

UNIPROT ID:

P15924

Full Name:

desmoplakin

Calculated MW:

2871 aa, 332 kDa

Observed MW:

240-330 kDa

Purification Method:

Protein G purification

CloneNo.:

1B10D4

Recommended Dilutions:

IF 1:50-1:500

Excitation/Emission maxima

wavelengths:

493 nm / 522 nm

## Applications

Tested Applications:

IF

Species Specificity:

Human

Positive Controls:

IF : A431 cells,

## Background Information

The desmoplakin (DP) is the most abundant desmosomal proteins and is located at the cytoplasmic portion of the desmosomes which are specialized cell-cell adhesion structures abundant in tissues such as muscle and epidermis that are subjected to mechanical stress. Desmoplakin 1 and 2 (DP 1 and 2) are two splice variants sharing common C-terminal and N-terminal globular head and tail domains, but differ in the length of the rod domain that links them. This antibody detects both DP1 (280-330 kDa) and DP2 (240-260 kDa). (PMID: 16467215, 11781569)

## Storage

Storage:

Store at -20°C. Avoid exposure to light. Stable for one year after shipment.

Storage Buffer:

PBS with 50% Glycerol, 0.05% Proclin300, 0.5% BSA, pH 7.3.

Aliquoting is unnecessary for -20°C storage

\*\*\* 20ul sizes contain 0.1% BSA

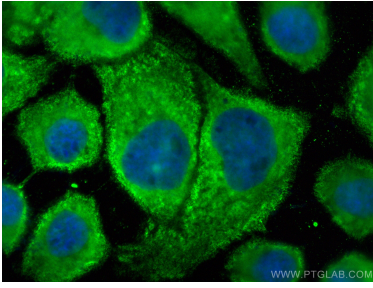
For technical support and original validation data for this product please contact:

T: 1 (888) 4PTGLAB (1-888-478-4522) (toll free  
in USA), or 1(312) 455-8498 (outside USA)

E: [proteintech@ptglab.com](mailto:proteintech@ptglab.com)  
W: [ptglab.com](http://ptglab.com)

This product is exclusively available under Proteintech Group brand and is not available to purchase from any other manufacturer.

## Selected Validation Data



Immunofluorescent analysis of (-20°C Methanol) fixed A431 cells using CoraLite® Plus 488 DSP antibody (CL488-68364, Clone: 1B10D4) at dilution of 1:200.