

For Research Use Only

CoraLite® Plus 488-conjugated CRMP5 Monoclonal antibody

Catalog Number:CL488-68272



Basic Information

Catalog Number: CL488-68272	GenBank Accession Number: BC002874	Purification Method: Protein A purification
Size: 100ul , Concentration: 1000 ug/ml by Nanodrop;	GeneID (NCBI): 56896	CloneNo.: 3F2D8
Source: Mouse	UNIPROT ID: Q9BPU6	Recommended Dilutions: IF/ICC 1:50-1:500
Isotype: IgG2a	Full Name: dihydropyrimidinase-like 5	Excitation/Emission maxima wavelengths: 493 nm / 522 nm
Immunogen Catalog Number: AG0783	Calculated MW: 61 kDa	
	Observed MW: 61 kDa	

Applications

Tested Applications: IF/ICC	Positive Controls: IF/ICC : SH-SY5Y cells,
Species Specificity: human, mouse, rat, pig, rabbit	

Background Information

Collapsin response mediator proteins (CRMPs) are a family consisting of five homologous cytosolic phosphoproteins (CRMP1-5). All five CRMPs are abundantly expressed in the developing brain and the adult nervous system. CRMP5 is phylogenetically divergent from the other four CRMPs, sharing only 50% homology; this protein plays an important role in modulating filopodial dynamics and, in turn, restricting neuronal growth cone development.

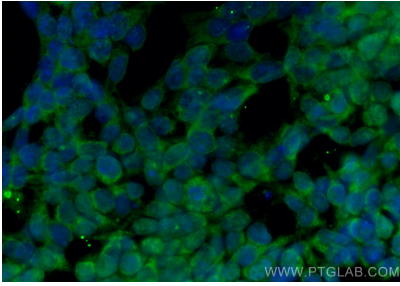
Storage

Storage:
Store at -20°C. Avoid exposure to light. Stable for one year after shipment.
Storage Buffer:
PBS with 50% Glycerol, 0.05% Proclin300, 0.5% BSA, pH 7.3.
Aliquoting is unnecessary for -20°C storage

For technical support and original validation data for this product please contact:
T: 1 (888) 4PTGLAB (1-888-478-4522) (toll free in USA), or 1(312) 455-8498 (outside USA)
E: proteintech@ptglab.com
W: ptglab.com

This product is exclusively available under Proteintech Group brand and is not available to purchase from any other manufacturer.

Selected Validation Data



Immunofluorescent analysis of (-20°C Ethanol) fixed SH-SY5Y cells using CoraLite® Plus 488 CRMP5 antibody (CL488-68272, Clone: 3F2D8) at dilution of 1:200.