

For Research Use Only

CoraLite® Plus 488-conjugated calcyphosine Monoclonal antibody

Catalog Number:CL488-68225



Basic Information

Catalog Number: CL488-68225	GenBank Accession Number: BC080599	Purification Method: Protein G purification
Size: 100ul , Concentration: 1000 ug/ml by Nanodrop;	GeneID (NCBI): 828	CloneNo.: 2B7D1
Source: Mouse	UNIPROT ID: Q13938	Recommended Dilutions: IF/ICC 1:50-1:500
Isotype: IgG1	Full Name: calcyphosine	Excitation/Emission maxima wavelengths: 493 nm / 522 nm
Immunogen Catalog Number: AG10330	Calculated MW: 189 aa, 21 kDa	
	Observed MW: 21 kDa	

Applications

Tested Applications: IF/ICC	Positive Controls: IF/ICC : U-251 cells,
Species Specificity: human, pig, rabbit	

Background Information

calcyphosine is a calcium-binding protein, which may play a role in the regulation of ion transport. Calcyphosine (CAPS) was initially identified in the canine thyroid but has also been detected in humans and other mammals. CAPS synthesis is increased by thyroid-stimulating hormone and cAMP analogs that promote cell proliferation and maintain cell differentiation. Recently, CAPS was found to be involved in many kinds of tumor.

Storage

Storage:
Store at -20°C. Avoid exposure to light. Stable for one year after shipment.
Storage Buffer:
PBS with 50% Glycerol, 0.05% Proclin300, 0.5% BSA, pH 7.3.
Aliquoting is unnecessary for -20°C storage

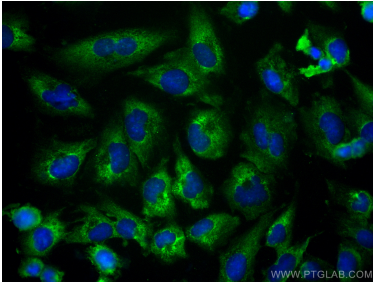
For technical support and original validation data for this product please contact:

T: 1 (888) 4PTGLAB (1-888-478-4522) (toll free in USA), or 1(312) 455-8498 (outside USA)

E: proteintech@ptglab.com
W: ptglab.com

This product is exclusively available under Proteintech Group brand and is not available to purchase from any other manufacturer.

Selected Validation Data



Immunofluorescent analysis of (-20°C Ethanol) fixed U-251 cells using CoraLite® Plus 488 calyphosine antibody (CL488-68225, Clone: 2B7D1) at dilution of 1:200.