

For Research Use Only

CoraLite® Plus 488-conjugated BNIP3L Monoclonal antibody

Catalog Number:CL488-68118



Basic Information

Catalog Number:

CL488-68118

Size:

100ul , Concentration: 1000 ug/ml by
Nanodrop;

Source:

Mouse

Isotype:

IgG1

Immunogen Catalog Number:

AG31547

GenBank Accession Number:

BC001559

GeneID (NCBI):

665

UNIPROT ID:

O60238

Full Name:

BCL2/adenovirus E1B 19kDa
interacting protein 3-like

Calculated MW:

24 kDa

Observed MW:

35 kD

Purification Method:

Protein G purification

CloneNo.:

1F6A3

Recommended Dilutions:

IF/ICC 1:50-1:500

**Excitation/Emission maxima
wavelengths:**

493 nm / 522 nm

Applications

Tested Applications:

IF/ICC, FC (Intra)

Species Specificity:

human

Positive Controls:

IF/ICC : HeLa cells,

Background Information

BNIP3L, also named as BNIP3A, BNIP3H, NIX and NIP3L. Bnip3L is one of the BH3-containing pro-apoptotic proteins and that it targets the mitochondria when inducing apoptosis. It may function as a tumor suppressor. BNIP3L has Dimer form with MW ~70 kDa.

Storage

Storage:

Store at -20°C. Avoid exposure to light. Stable for one year after shipment.

Storage Buffer:

PBS with 50% Glycerol, 0.05% Proclin300, 0.5% BSA, pH 7.3.

Aliquoting is unnecessary for -20°C storage

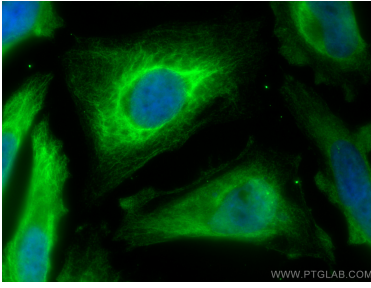
For technical support and original validation data for this product please contact:

T: 1 (888) 4PTGLAB (1-888-478-4522) (toll free
in USA), or 1(312) 455-8498 (outside USA)

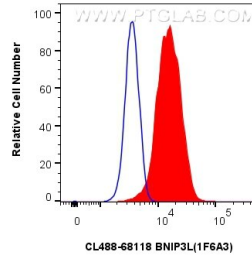
E: proteintech@ptglab.com
W: ptglab.com

This product is exclusively available under Proteintech Group brand and is not available to purchase from any other manufacturer.

Selected Validation Data



Immunofluorescent analysis of (-20°C Ethanol) fixed HeLa cells using CoraLite® Plus 488 BNIP3L antibody (CL488-68118, Clone: 1F6A3) at dilution of 1:200.



1x10⁶ HeLa cells were intracellularly stained with 0.4 ug CoraLite® Plus 488-conjugated BNIP3L Monoclonal antibody (CL488-68118, Clone:1F6A3) (red), or 0.4 ug CoraLite® Plus 488 Mouse IgG1 Isotype Control (1F8D3) (CL488-66360-1, Clone: 1F8D3) (blue). Cells were fixed with 4% PFA and permeabilized with Flow Cytometry Perm Buffer (PF00011-C).