

For Research Use Only

# CoraLite® Plus 488-conjugated LIMK1 Monoclonal antibody

Catalog Number: CL488-67974

Featured Product



## Basic Information

Catalog Number:

CL488-67974

Size:

100ul , Concentration: 1000 ug/ml by  
Nanodrop;

Source:

Mouse

Isotype:

IgG2a

Immunogen Catalog Number:

AG28862

GenBank Accession Number:

BC152982

GeneID (NCBI):

3984

UNIPROT ID:

P53667

Full Name:

LIM domain kinase 1

Calculated MW:

647 aa, 73 kDa

Observed MW:

65 kDa

Purification Method:

Protein A purification

CloneNo.:

2B11E9

Recommended Dilutions:

IF/ICC 1:50-1:500

Excitation/Emission maxima  
wavelengths:

493 nm / 522 nm

## Applications

Tested Applications:

IF/ICC, FC (Intra)

Species Specificity:

human, mouse, rat, pig, rabbit

Positive Controls:

IF/ICC : HeLa cells,

## Background Information

LIMK1, also named LIMK, belongs to the protein kinase superfamily and TKL Ser/Thr protein kinase family. LIMK1 is a protein kinase which regulates actin filament dynamics. Phosphorylates and inactivates the actin binding/depolymerizing factor cofilin, thereby stabilizing the actin cytoskeleton. Isoform 3 has a dominant negative effect on actin cytoskeletal changes. LIMK1 may be involved in brain development. The antibody has no cross-reaction with LIMK2.

## Storage

Storage:

Store at -20°C. Avoid exposure to light. Stable for one year after shipment.

Storage Buffer:

PBS with 50% Glycerol, 0.05% Proclin300, 0.5% BSA, pH 7.3.

Aliquoting is unnecessary for -20°C storage

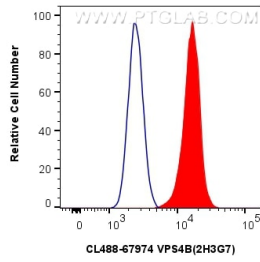
For technical support and original validation data for this product please contact:

T: 1 (888) 4PTGLAB (1-888-478-4522) (toll free  
in USA), or 1(312) 455-8498 (outside USA)

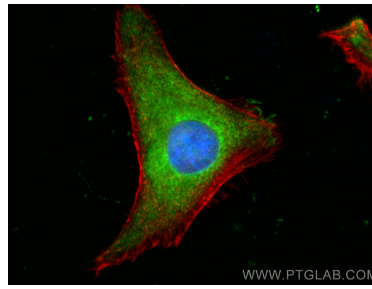
E: [proteintech@ptglab.com](mailto:proteintech@ptglab.com)  
W: [ptglab.com](http://ptglab.com)

This product is exclusively available under Proteintech Group brand and is not available to purchase from any other manufacturer.

## Selected Validation Data



$1 \times 10^6$  HeLa cells were intracellularly stained with 0.4 ug CoraLite® Plus 488-conjugated LIMK1 Monoclonal antibody (CL488-67974, Clone:2B11E9) (red), or 0.4 ug Isotype Control (blue). Cells were fixed with 4% PFA and permeabilized with Flow Cytometry Perm Buffer (PF00011-C).



Immunofluorescent analysis of (-20°C Ethanol) fixed HeLa cells using CoraLite® Plus 488 LIMK1 antibody (CL488-67974, Clone: 2B11E9) at dilution of 1:200, CL594-Phalloidin (red).