

For Research Use Only

CoraLite® Plus 488-conjugated KDM1B Monoclonal antibody



Catalog Number: **CL488-67886**

Basic Information

Catalog Number:

CL488-67886

Size:

100ul , Concentration: 1000 µg/ml by
Nanodrop;

Source:

Mouse

Isotype:

IgG2b

Immunogen Catalog Number:

AG30672

GenBank Accession Number:

NM_001364614

GeneID (NCBI):

221656

UNIPROT ID:

Q8NB78

Full Name:

amine oxidase (flavin containing)
domain 1

Calculated MW:

92 kDa

Observed MW:

92 kDa

Purification Method:

Protein A purification

CloneNo.:

1E1A3

Excitation/Emission maxima
wavelengths:

493 nm / 522 nm

Applications

Tested Applications:

FC (Intra)

Species Specificity:

Human, rat, mouse

Storage

Storage:

Store at -20°C. Avoid exposure to light. Stable for one year after shipment.

Storage Buffer:

PBS with 50% Glycerol, 0.05% Proclin300, 0.5% BSA, pH 7.3.

Aliquoting is unnecessary for -20°C storage

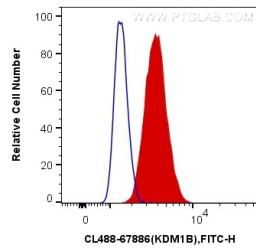
For technical support and original validation data for this product please contact:

T: 1 (888) 4PTGLAB (1-888-478-4522) (toll free
in USA), or 1(312) 455-8498 (outside USA)

E: proteintech@ptglab.com
W: ptglab.com

This product is exclusively available under Proteintech Group brand and is not available to purchase from any other manufacturer.

Selected Validation Data



1X10⁶ SW 1990 cells were intracellularly stained with 0.4 ug CoraLite® Plus 488 Anti-HUMAN KDM1B (CL488-67886, Clone:1E1A3) (red), or 0.4 ug Control Antibody. Cells were fixed and permeabilized with Transcription Factor Staining Buffer Kit (PF00011).