

For Research Use Only

CoraLite® Plus 488-conjugated AIF Monoclonal antibody

Catalog Number:CL488-67791



Basic Information

Catalog Number: CL488-67791	GenBank Accession Number: BC111065	Purification Method: Protein A purification
Size: 100ul , Concentration: 1000 ug/ml by Nanodrop;	GeneID (NCBI): 9131	CloneNo.: 8C12B2
Source: Mouse	UNIPROT ID: O95831	Recommended Dilutions: IF-P 1:50-1:500
Isotype: IgG2a	Full Name: apoptosis-inducing factor, mitochondrion-associated, 1	Excitation/Emission maxima wavelengths: 493 nm / 522 nm
Immunogen Catalog Number: AG12400	Calculated MW: 609 aa, 66 kDa	
	Observed MW: 67 kDa, 57 kDa	

Applications

Tested Applications: IF-P	Positive Controls: IF-P : human kidney tissue,
Species Specificity: Human	

Background Information

Apoptosis-inducing factor (AIF) is one of the mitochondrial proteins to be released into the cytosol during apoptosis, and it is discovered as the first protein that regulates caspase-independent apoptosis(PMID:20494118). AIF is encoded as a 67 kDa protein that contains a mitochondrial localization signal (MLS) in the N-terminus.It is cleaved from the 62 kDa to the 57 kDa form following ischemic injury and translocated from the mitochondria to the nucleus in a calpain-dependent manner(PMID:19332058).

Storage

Storage:
Store at -20°C. Avoid exposure to light. Stable for one year after shipment.
Storage Buffer:
PBS with 50% Glycerol, 0.05% Proclin300, 0.5% BSA, pH 7.3.
Aliquoting is unnecessary for -20°C storage

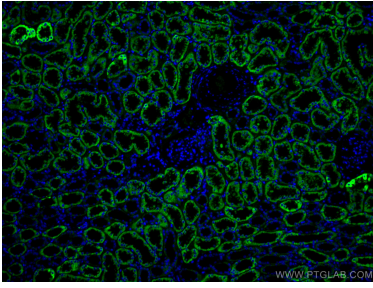
For technical support and original validation data for this product please contact:

T: 1 (888) 4PTGLAB (1-888-478-4522) (toll free
in USA), or 1(312) 455-8498 (outside USA)

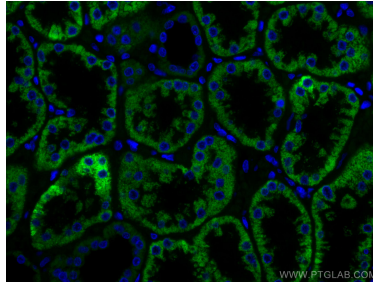
E: proteintech@ptglab.com
W: ptglab.com

This product is exclusively available under Proteintech Group brand and is not available to purchase from any other manufacturer.

Selected Validation Data



Immunofluorescent analysis of (4% PFA) fixed human kidney tissue using Coralite® Plus 488 AIF antibody (CL488-67791, Clone: 8C12B2) at dilution of 1:200.



Immunofluorescent analysis of (4% PFA) fixed human kidney tissue using Coralite® Plus 488 AIF antibody (CL488-67791, Clone: 8C12B2) at dilution of 1:200.