

For Research Use Only

CoraLite® Plus 488-conjugated smooth muscle actin specific Monoclonal antibody



Catalog Number: **CL488-67735**

Basic Information

Catalog Number: CL488-67735	GenBank Accession Number: NM_001613	Purification Method: Protein G purification
Size: 100ul , Concentration: 1000 µg/ml by Nanodrop;	GeneID (NCBI): 59	CloneNo.: 1E9A11
Source: Mouse	Full Name: actin, alpha 2, smooth muscle, aorta	Recommended Dilutions: IF 1:50-1:500
Isotype: IgG1	Calculated MW: 42 kDa	Excitation/Emission maxima wavelengths: 488 nm / 515 nm
	Observed MW: 42 kDa	

Applications

Tested Applications: IF	Positive Controls: IF : mouse heart tissue,
Species Specificity: Human, mouse, rat, pig	

Background Information

ACTA2 (also known as α -smooth muscle actin or α -SMA) belongs to the actin family. Actins are highly conserved proteins that are involved in various types of cell motility and are ubiquitously expressed in all eukaryotic cells. ACTA2 is primarily expressed in vascular smooth muscle and anti-ACTA2 is commonly used to marker smooth muscle cells.

Storage

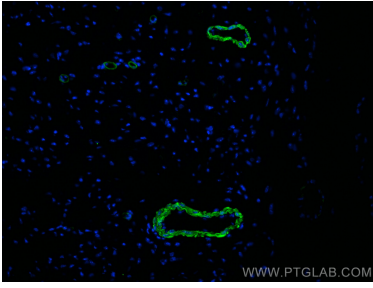
Storage:
Store at -20°C. Avoid exposure to light.
Storage Buffer:
PBS with 50% Glycerol, 0.05% Proclin300, 0.5% BSA, pH 7.3.
Aliquoting is unnecessary for -20°C storage

***** 20ul sizes contain 0.1% BSA**

For technical support and original validation data for this product please contact:
T: 1 (888) 4PTGLAB (1-888-478-4522) (toll free in USA), or 1(312) 455-8498 (outside USA)
E: proteintech@ptglab.com
W: ptglab.com

This product is exclusively available under Proteintech Group brand and is not available to purchase from any other manufacturer.

Selected Validation Data



Immunofluorescent analysis of (4% PFA) fixed mouse heart tissue using CoraLite® Plus 488 smooth muscle actin specific antibody (CL488-67735, Clone: 1E9A11) at dilution of 1:200.