

For Research Use Only

# CoraLite® Plus 488-conjugated PI3 Kinase p85 Beta Monoclonal antibody

Catalog Number:CL488-67644



## Basic Information

<b>Catalog Number:</b> CL488-67644	<b>GenBank Accession Number:</b> BC014170	<b>Purification Method:</b> Protein A purification
<b>Size:</b> 100ul , Concentration: 1000 ug/ml by Nanodrop;	<b>GeneID (NCBI):</b> 5296	<b>CloneNo.:</b> 2B3B6
<b>Source:</b> Mouse	<b>UNIPROT ID:</b> O00459	<b>Recommended Dilutions:</b> IF/ICC 1:50-1:500
<b>Isotype:</b> IgG2b	<b>Full Name:</b> phosphoinositide-3-kinase, regulatory subunit 2 (beta)	<b>Excitation/Emission maxima wavelengths:</b> 493 nm / 522 nm
<b>Immunogen Catalog Number:</b> AG14369	<b>Calculated MW:</b> 728 aa, 82 kDa	
	<b>Observed MW:</b> 85 kDa	

## Applications

<b>Tested Applications:</b> IF/ICC, FC (Intra)	<b>Positive Controls:</b> IF/ICC : HeLa cells,
<b>Species Specificity:</b> human, mouse, rat	

## Background Information

PI3 Kinase p85 is also named as PIK3R2 and belongs to the PI3K p85 subunit family. PI3 Kinase p85 is a regulatory subunit of phosphoinositide-3-kinase (PI3K) which is a kinase that phosphorylates phosphatidylinositol 4,5-bisphosphate to generate PIP3. PI3 Kinase p85 binds to activated (phosphorylated) protein-tyrosine kinases through its SH2 domain, and then acts as an adapter to mediate the association of the p110 catalytic unit to the plasma membrane. It promotes nuclear translocation of XBP1 isoform 2 in a ER stress or insulin-dependent manner during metabolic overloading in the liver and hence plays a role in glucose tolerance improvement (PMID:23604317).

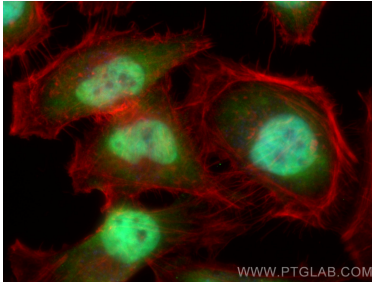
## Storage

**Storage:**  
Store at -20°C. Avoid exposure to light. Stable for one year after shipment.  
**Storage Buffer:**  
PBS with 50% Glycerol, 0.05% Proclin300, 0.5% BSA, pH 7.3.  
Aliquoting is unnecessary for -20°C storage

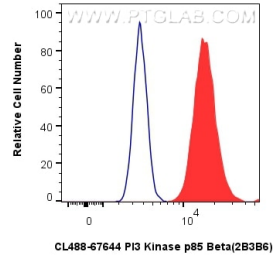
For technical support and original validation data for this product please contact:  
T: 1 (888) 4PTGLAB (1-888-478-4522) (toll free in USA), or 1(312) 455-8498 (outside USA)  
E: proteintech@ptglab.com  
W: ptglab.com

This product is exclusively available under Proteintech Group brand and is not available to purchase from any other manufacturer.

## Selected Validation Data



Immunofluorescent analysis of (4% PFA) fixed HeLa cells using Coralite® Plus 488 PI3 Kinase p85 Beta antibody (CL488-67644, Clone: 2B3B6) at dilution of 1:200, CL594-Phalloidin (red).



1x10<sup>6</sup> HeLa cells were intracellularly stained with 0.8 ug Coralite® Plus 488 PI3 Kinase P85 Beta Monoclonal Antibody (CL488-67644, Clone:2B3B6) (red), or 0.8 ug Coralite® Plus 488 Mouse IgG2b Isotype Control (MPC-11) (CL488-65128, Clone: MPC-11) (blue). Cells were fixed with 4% PFA and permeabilized with Flow Cytometry Perm Buffer (PF00011-C).