

For Research Use Only

CoraLite® Plus 488-conjugated SEC63 Monoclonal antibody

Catalog Number:CL488-67352



Basic Information

Catalog Number: CL488-67352	GenBank Accession Number: BC047221	Purification Method: Protein G purification
Size: 100ul , Concentration: 1000 ug/ml by Nanodrop;	GeneID (NCBI): 11231	CloneNo.: 1C10E1
Source: Mouse	UNIPROT ID: Q9UGP8	Recommended Dilutions: IF/ICC 1:50-1:500
Isotype: IgG1	Full Name: SEC63 homolog (S. cerevisiae)	Excitation/Emission maxima wavelengths: 493 nm / 522 nm
Immunogen Catalog Number: AG5783	Calculated MW: 88 kDa	
	Observed MW: 90 kDa	

Applications

Tested Applications: IF/ICC	Positive Controls: IF/ICC : HEK-293 cells,
Species Specificity: Human	

Background Information

SEC63 is a integral ER membrane protein. SEC63 and SEC62 form a dimeric complex and play a central role in translocation of nascent and newly synthesized precursor polypeptides into the ER. Mutations in the gene encoding SEC63 cause polycystic liver disease in humans. The intact SEC63 protein is usually detected around 83-90 kDa, while smaller cleavage products can be observed by autophagy proteolysis (PMID: 25052096)

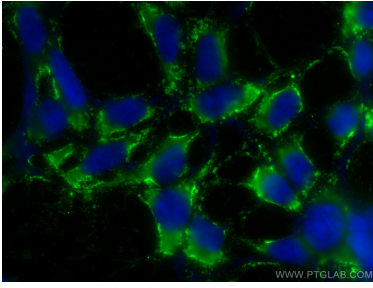
Storage

Storage:
Store at -20°C. Avoid exposure to light. Stable for one year after shipment.
Storage Buffer:
PBS with 50% Glycerol, 0.05% Proclin300, 0.5% BSA, pH 7.3.
Aliquoting is unnecessary for -20°C storage

For technical support and original validation data for this product please contact:
T: 1 (888) 4PTGLAB (1-888-478-4522) (toll free in USA), or 1(312) 455-8498 (outside USA)
E: proteintech@ptglab.com
W: ptglab.com

This product is exclusively available under Proteintech Group brand and is not available to purchase from any other manufacturer.

Selected Validation Data



Immunofluorescent analysis of (-20°C Ethanol) fixed HEK-293 cells using CoraLite® Plus 488 SEC63 antibody (CL488-67352, Clone: 1C10E1) at dilution of 1:200.