

For Research Use Only



CoraLite® Plus 488-conjugated CD107a / LAMP1 Monoclonal antibody

Catalog Number: **CL488-67300**

Basic Information

Catalog Number: CL488-67300	GenBank Accession Number: BC021288	Purification Method: Protein A purification
Size: 100ul , Concentration: 1000 µg/ml by Nanodrop;	GeneID (NCBI): 3916	CloneNo.: 3B2E9
Source: Mouse	Full Name: lysosomal-associated membrane protein 1	Recommended Dilutions: IF 1:50-1:500
Isotype: IgG2b	Calculated MW: 417 aa, 45 kDa	Excitation/Emission maxima wavelengths: 493 nm / 522 nm
Immunogen Catalog Number: AG28869	Observed MW: 90-120 kDa	

Applications

Tested Applications: FC (Intra), IF	Positive Controls: IF : human liver cancer tissue,
Species Specificity: Human	

Background Information

LAMP1 (also known as CD107a) is a 90-120 kDa heavily glycosylated membrane protein enriched in the lysosomal membrane. LAMP1 functions to provide selectins with carbohydrate ligands. This protein has also been shown to be a marker of degranulation on lymphocytes such as CD8+ and NK cells and may also play a role in tumor cell differentiation and metastasis.

Storage

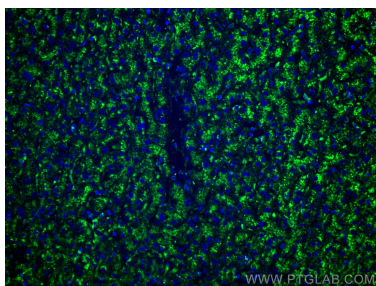
Storage:
Store at -20°C. Avoid exposure to light. Stable for one year after shipment.
Storage Buffer:
PBS with 50% Glycerol, 0.05% Proclin300, 0.5% BSA, pH 7.3.
Aliquoting is unnecessary for -20°C storage

*** 20ul sizes contain 0.1% BSA

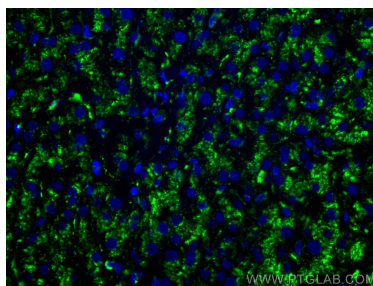
For technical support and original validation data for this product please contact:
T: 1 (888) 4PTGLAB (1-888-478-4522) (toll free in USA), or 1(312) 455-8498 (outside USA)
E: proteintech@ptglab.com
W: ptglab.com

This product is exclusively available under Proteintech Group brand and is not available to purchase from any other manufacturer.

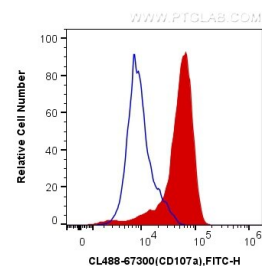
Selected Validation Data



Immunofluorescent analysis of (4% PFA) fixed human liver cancer tissue using CoraLite® Plus 488 CD107a antibody (CL488-67300, Clone: 3B2E9) at dilution of 1:200.



Immunofluorescent analysis of (4% PFA) fixed human liver cancer tissue using CoraLite® Plus 488 CD107a antibody (CL488-67300, Clone: 3B2E9) at dilution of 1:200.



1X10⁶ NK92 were intracellularly stained with 0.4 ug CoraLite® Plus 488 Anti-Human CD107a / LAMP1 (CL488-67300, Clone:3B2E9) (red), or 0.4 ug x. Cells were fixed with 4% PFA and permeabilized with Flow Cytometry Perm Buffer (PF00011-C).