

For Research Use Only

# CoraLite® Plus 488-conjugated MRP1 Monoclonal antibody



Catalog Number: CL488-67228

## Basic Information

<b>Catalog Number:</b> CL488-67228	<b>GenBank Accession Number:</b> NM_004996	<b>Purification Method:</b> Protein G purification
<b>Size:</b> 100ul , Concentration: 1000 µg/ml by Nanodrop;	<b>GeneID (NCBI):</b> 4363	<b>CloneNo.:</b> 1G4A2
<b>Source:</b> Mouse	<b>UNIPROT ID:</b> P33527	<b>Recommended Dilutions:</b> IF/ICC 1:50-1:500
<b>Isotype:</b> IgG1	<b>Full Name:</b> ATP-binding cassette, sub-family C (CFTR/MRP), member 1	<b>Excitation/Emission maxima wavelengths:</b> 493 nm / 522 nm
<b>Immunogen Catalog Number:</b> AG27048	<b>Calculated MW:</b> 172 kDa	
	<b>Observed MW:</b> 180-190 kDa	

## Applications

<b>Tested Applications:</b> IF/ICC	<b>Positive Controls:</b> IF/ICC : A549 cells,
<b>Species Specificity:</b> human	

## Background Information

Multidrug resistant-associated protein 1 (MRP1; ABCC1) is a member of the ATP-binding cassette (ABC) transporter protein superfamily, subfamily C. MRP1 is overexpressed in cancers and contributes to the occurrence of multidrug resistance (MDR). Expression of MRP1 has been considered as a negative marker for the outcome of chemotherapy. Recently MRP1 has been reported to play a crucial role in Aβ clearance at the blood-brain barrier.

## Storage

**Storage:**  
Store at -20°C. Avoid exposure to light.  
**Storage Buffer:**  
PBS with 50% Glycerol, 0.05% Proclin300, 0.5% BSA, pH 7.3.  
Aliquoting is unnecessary for -20°C storage

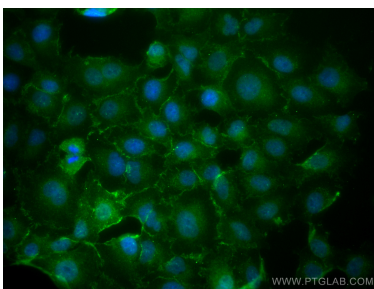
For technical support and original validation data for this product please contact:

T: 1 (888) 4PTGLAB (1-888-478-4522) (toll free  
in USA), or 1(312) 455-8498 (outside USA)

E: [proteintech@ptglab.com](mailto:proteintech@ptglab.com)  
W: [ptglab.com](http://ptglab.com)

**This product is exclusively available under Proteintech Group brand and is not available to purchase from any other manufacturer.**

## Selected Validation Data



Immunofluorescent analysis of (4% PFA) fixed A549 cells using CoraLite® Plus 488 MRP1 antibody (CL488-67228, Clone: 1G4A2 ) at dilution of 1:200.