

For Research Use Only

# CoraLite® Plus 488-conjugated RAP1B Monoclonal antibody

Catalog Number:CL488-67174



## Basic Information

**Catalog Number:**

CL488-67174

**Size:**

100ul , Concentration: 1000 ug/ml by  
Nanodrop;

**Source:**

Mouse

**Isotype:**

IgG1

**Immunogen Catalog Number:**

AG29212

**GenBank Accession Number:**

BC000176

**GeneID (NCBI):**

5908

**UNIPROT ID:**

P61224

**Full Name:**

RAP1B, member of RAS oncogene  
family

**Calculated MW:**

21 kDa

**Observed MW:**

21 kDa

**Purification Method:**

Protein G purification

**CloneNo.:**

2E7G11

**Recommended Dilutions:**

IF/ICC 1:50-1:500

**Excitation/Emission maxima  
wavelengths:**

493 nm / 522 nm

## Applications

**Tested Applications:**

IF/ICC, FC (Intra)

**Species Specificity:**

human, mouse, rat

**Positive Controls:**

IF/ICC : HeLa cells,

## Background Information

RAP1B is a member of the RAS-like small GTP-binding protein superfamily. Members of this family regulate multiple cellular processes including cell adhesion and growth and differentiation. RAP1B localizes to cellular membranes and has been shown to regulate integrin-mediated cell signaling. It also plays a role in regulating outside-in signaling in platelets.

## Storage

**Storage:**

Store at -20°C. Avoid exposure to light. Stable for one year after shipment.

**Storage Buffer:**

PBS with 50% Glycerol, 0.05% Proclin300, 0.5% BSA, pH 7.3.

Aliquoting is unnecessary for -20°C storage

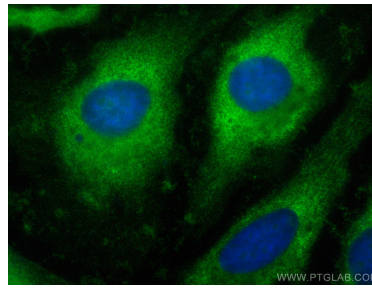
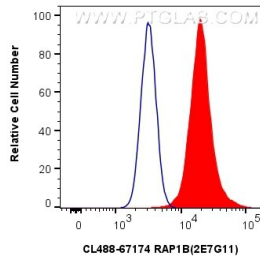
For technical support and original validation data for this product please contact:

T: 1 (888) 4PTGLAB (1-888-478-4522) (toll free  
in USA), or 1(312) 455-8498 (outside USA)

E: [proteintech@ptglab.com](mailto:proteintech@ptglab.com)  
W: [ptglab.com](http://ptglab.com)

**This product is exclusively available under Proteintech Group brand and is not available to purchase from any other manufacturer.**

## Selected Validation Data



1x10<sup>6</sup> HeLa cells were intracellularly stained with 0.4 ug CoraLite® Plus 488-conjugated RAP1B Monoclonal antibody (CL488-67174, Clone:2E7G11) (red), or 0.4 ug CoraLite® Plus 488 Mouse IgG1 Isotype Control (1F8D3) (CL488-66360-1, Clone: 1F8D3) (blue). Cells were fixed with 4% PFA and permeabilized with Flow Cytometry Perm Buffer (PF00011-C).

Immunofluorescent analysis of (-20°C Ethanol) fixed HeLa cells using CoraLite® Plus 488 RAP1B antibody (CL488-67174, Clone: 2E7G11) at dilution of 1:200.