

For Research Use Only

CoraLite® Plus 488-conjugated VEGFC Monoclonal antibody

Catalog Number:CL488-67116



Basic Information

Catalog Number: CL488-67116	GenBank Accession Number: BC035212	Purification Method: Protein G purification
Size: 100ul , Concentration: 1000 ug/ml by Nanodrop;	GeneID (NCBI): 7424	CloneNo.: 2B11F7
Source: Mouse	UNIPROT ID: P49767	Recommended Dilutions: IF/ICC 1:50-1:500
Isotype: IgG1	Full Name: vascular endothelial growth factor C	Excitation/Emission maxima wavelengths: 493 nm / 522 nm
Immunogen Catalog Number: AG18182	Calculated MW: 419 aa, 47 kDa	
	Observed MW: 47 kDa	

Applications

Tested Applications: IF/ICC, FC (Intra)	Positive Controls: IF/ICC : MCF-7 cells,
Species Specificity: human	

Background Information

VEGFC is a member of the platelet-derived growth factor / vascular endothelial growth factor (PDGF/VEGF) family. The main function of VEGFC is to promote the growth of lymphatic vessels (Lymphangiogenesis). It acts on lymphatic endothelial cells (LECs) primarily via its receptor VEGFR-3 promoting survival, growth, and migration.

Storage

Storage:
Store at -20°C. Avoid exposure to light. Stable for one year after shipment.
Storage Buffer:
PBS with 50% Glycerol, 0.05% Proclin300, 0.5% BSA, pH 7.3.
Aliquoting is unnecessary for -20°C storage

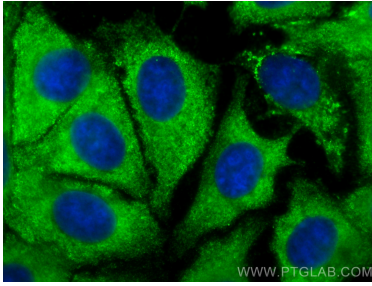
For technical support and original validation data for this product please contact:

T: 1 (888) 4PTGLAB (1-888-478-4522) (toll free
in USA), or 1(312) 455-8498 (outside USA)

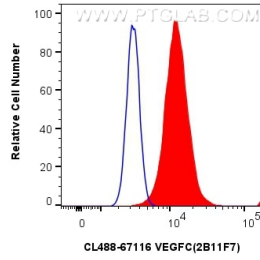
E: proteintech@ptglab.com
W: ptglab.com

This product is exclusively available under Proteintech Group brand and is not available to purchase from any other manufacturer.

Selected Validation Data



Immunofluorescent analysis of (-20°C Methanol) fixed MCF-7 cells using CoraLite® Plus 488 VEGFC antibody (CL488-67116, Clone: 2B11F7) at dilution of 1:200.



1x10⁶ MCF-7 cells were intracellularly stained with 0.4 ug CoraLite® Plus 488-conjugated VEGFC Monoclonal antibody (CL488-67116, Clone:2B11F7) (red), or 0.4 ug CoraLite® Plus 488 Mouse IgG1 Isotype Control (1F8D3) (CL488-66360-1, Clone: 1F8D3) (blue). Cells were fixed with 4% PFA and permeabilized with Flow Cytometry Perm Buffer (PF00011-C).