

For Research Use Only

# CoraLite® Plus 488-conjugated BCAT1 Monoclonal antibody

Catalog Number:CL488-67084



## Basic Information

<b>Catalog Number:</b> CL488-67084	<b>GenBank Accession Number:</b> BC033864	<b>Purification Method:</b> Protein G purification
<b>Size:</b> 100ul , Concentration: 1000 ug/ml by Nanodrop;	<b>GeneID (NCBI):</b> 586	<b>CloneNo.:</b> 1G3A10
<b>Source:</b> Mouse	<b>UNIPROT ID:</b> P54687	<b>Recommended Dilutions:</b> WB 1:2000-1:16000
<b>Isotype:</b> IgG1	<b>Full Name:</b> branched chain aminotransferase 1, cytosolic	<b>Excitation/Emission maxima wavelengths:</b> 493 nm / 522 nm
<b>Immunogen Catalog Number:</b> AG28328	<b>Calculated MW:</b> 320 aa, 36 kDa	
	<b>Observed MW:</b> 42-45 kDa	

## Applications

<b>Tested Applications:</b> WB	<b>Positive Controls:</b> WB : Daudi cells,
<b>Species Specificity:</b> human, pig	

## Background Information

BCAT1, also named as branched-chain amino acid transaminase1, is a cytosolic enzyme responsible for the reversible transamination of leucine, isoleucine and valine that catalyzes the transformation of branched-chain L-amino acids (BCAA) into branched-chain  $\alpha$ -ketoacids (BCKA), thereby providing macromolecule precursors. It has been reported that BCAT1 is associated with tumor growth and disease progression (PMID:29255149).

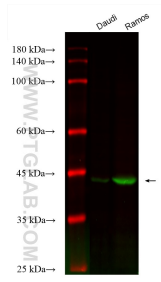
## Storage

**Storage:**  
Store at -20°C. Avoid exposure to light. Stable for one year after shipment.  
**Storage Buffer:**  
PBS with 50% Glycerol, 0.05% Proclin300, 0.5% BSA, pH 7.3.  
Aliquoting is unnecessary for -20°C storage

For technical support and original validation data for this product please contact:  
T: 1 (888) 4PTGLAB (1-888-478-4522) (toll free in USA), or 1(312) 455-8498 (outside USA)  
E: proteintech@ptglab.com  
W: ptglab.com

This product is exclusively available under Proteintech Group brand and is not available to purchase from any other manufacturer.

## Selected Validation Data



Various lysates were subjected to SDS PAGE followed by western blot with CL488-67084 (BCAT1 antibody) at dilution of 1:8000 incubated at room temperature for 1.5 hours.