

For Research Use Only

CoraLite® Plus 488-conjugated Neuroserpin Monoclonal antibody

Catalog Number:CL488-66997



Basic Information

Catalog Number:

CL488-66997

Size:

100ul , Concentration: 1000 ug/ml by Nanodrop;

Source:

Mouse

Isotype:

IgG1

Immunogen Catalog Number:

AG28636

GenBank Accession Number:

BC018043

GeneID (NCBI):

5274

UNIPROT ID:

Q99574

Full Name:

serpin peptidase inhibitor, clade I (neuroserpin), member 1

Calculated MW:

410 aa, 47 kDa

Observed MW:

46 kDa

Purification Method:

Protein G purification

CloneNo.:

1G4C6

Recommended Dilutions:

IF/ICC 1:50-1:500

Excitation/Emission maxima wavelengths:

493 nm / 522 nm

Applications

Tested Applications:

IF/ICC

Species Specificity:

human, rat, pig

Positive Controls:

IF/ICC : U-251 cells,

Background Information

Neuroserpin is a member of the serpin family of serine protease inhibitors predominantly expressed in the nervous system, such as the cerebral cortex, hippocampus and the spinal cord. Neuroserpin exerts protective effects in neurons against excitotoxicity both in vitro and in vivo. Its proteolytic inhibitory activity is shown to protect neurons against damage caused by plasmin activation. Mice overexpressing neuroserpin exhibited loss of tPA activity in the brain. Overexpression of neuroserpin in primary neurons leads to increased dendritic arborization and altered dendritic spine shape.

Storage

Storage:

Store at -20°C. Avoid exposure to light. Stable for one year after shipment.

Storage Buffer:

PBS with 50% Glycerol, 0.05% Proclin300, 0.5% BSA, pH 7.3.

Aliquoting is unnecessary for -20°C storage

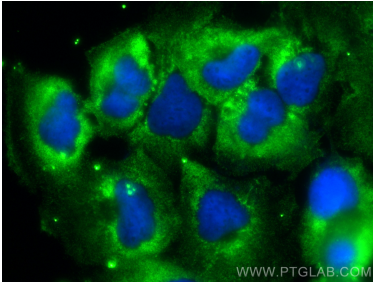
For technical support and original validation data for this product please contact:

T: 1 (888) 4PTGLAB (1-888-478-4522) (toll free in USA), or 1(312) 455-8498 (outside USA)

E: proteintech@ptglab.com
W: ptglab.com

This product is exclusively available under Proteintech Group brand and is not available to purchase from any other manufacturer.

Selected Validation Data



Immunofluorescent analysis of (-20°C Ethanol)
fixed U-251 cells using CoraLite® Plus 488
Neuroserpin antibody (CL488-66997, Clone: 1G4C6
) at dilution of 1:200.