

For Research Use Only

CoraLite® Plus 488-conjugated RAB27B Monoclonal antibody



Catalog Number: CL488-66944

Featured Product

Basic Information

Catalog Number:

CL488-66944

Size:

100ul , Concentration: 1000 µg/ml by
Nanodrop;

Source:

Mouse

Isotype:

IgG2a

Immunogen Catalog Number:

AG18756

GenBank Accession Number:

BC027474

GeneID (NCBI):

5874

UNIPROT ID:

O00194

Full Name:

RAB27B, member RAS oncogene
family

Calculated MW:

218 aa, 25 kDa

Observed MW:

25 kDa

Purification Method:

Protein A purification

CloneNo.:

2B9G9

Recommended Dilutions:

IF/ICC 1:50-1:500

**Excitation/Emission maxima
wavelengths:**

493 nm / 522 nm

Applications

Tested Applications:

IF/ICC, FC (Intra)

Species Specificity:

human

Positive Controls:

IF/ICC : A431 cells,

Background Information

The Rab27 GTPase subfamily consists of two closely related homologs, Rab27a and Rab27b. Northern blot analysis revealed that Rab27b is expressed significantly only in testis, in which the predominant transcript was 1.4 kb in size. An 8-kb mRNA of unknown origin was detected in many tissues. Rab27b is associated with tubulovesicle membranes in the parietal cell and Rab27b may play a role in stimulation-associated membrane recruitment and gastric acid secretion. Rab27b is recently reported as a marker for breast cancer progression. It regulates invasive growth and metastasis in ER-positive breast cancer cell lines, and increased expression is associated with poor prognosis in humans.

Storage

Storage:

Store at -20°C. Avoid exposure to light. Stable for one year after shipment.

Storage Buffer:

PBS with 50% Glycerol, 0.05% Proclin300, 0.5% BSA, pH 7.3.

Aliquoting is unnecessary for -20°C storage

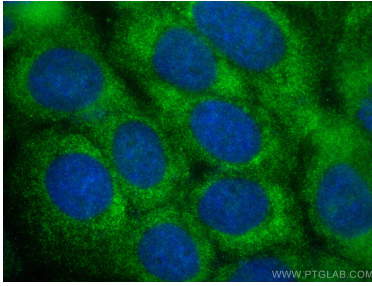
For technical support and original validation data for this product please contact:

T: 1 (888) 4PTGLAB (1-888-478-4522) (toll free
in USA), or 1(312) 455-8498 (outside USA)

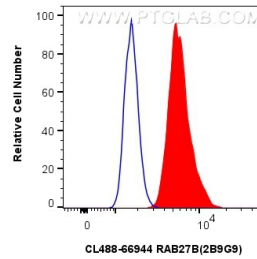
E: proteintech@ptglab.com
W: ptglab.com

This product is exclusively available under Proteintech Group brand and is not available to purchase from any other manufacturer.

Selected Validation Data



Immunofluorescent analysis of (-20°C Methanol) fixed A431 cells using Coralite® Plus 488 RAB27B antibody (CL488-66944, Clone: 2B9G9) at dilution of 1:200, CL594-Phalloidin (red).



1x10⁶ A431 cells were intracellularly stained with 0.4 ug Coralite® Plus 488-conjugated RAB27B Monoclonal antibody (CL488-66944, Clone:2B9G9) (red), or 0.4 ug Isotype Control (CL488-66360-2) (blue). Cells were fixed with 4% PFA and permeabilized with Flow Cytometry Perm Buffer (PF00011-C).