

For Research Use Only

CoraLite® Plus 488-conjugated C7 Monoclonal antibody

Catalog Number:CL488-66908



Basic Information

Catalog Number: CL488-66908	GenBank Accession Number: BC063851	Purification Method: Protein G purification
Size: 100ul , Concentration: 1000 ug/ml by Nanodrop;	GeneID (NCBI): 730	CloneNo.: 1H9C4
Source: Mouse	UNIPROT ID: P10643	Recommended Dilutions: IF/ICC 1:50-1:500
Isotype: IgG1	Full Name: complement component 7	Excitation/Emission maxima wavelengths: 493 nm / 522 nm
Immunogen Catalog Number: AG12552	Calculated MW: 843 aa, 94 kDa	
	Observed MW: 100 kDa	

Applications

Tested Applications: IF/ICC, FC (Intra)	Positive Controls: IF/ICC : HepG2 cells,
Species Specificity: human	

Background Information

C7, a single-chain plasma glycoprotein, is a component of the complement system. It is a constituent of the membrane attack complex (MAC) that plays a key role in the innate and adaptive immune response by forming pores in the plasma membrane of target cells. C7 serves as a membrane anchor. People with C7 deficiency are prone to bacterial infection.

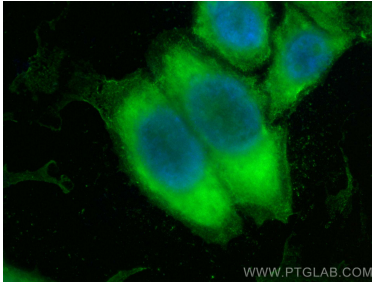
Storage

Storage:
Store at -20°C. Avoid exposure to light. Stable for one year after shipment.
Storage Buffer:
PBS with 50% Glycerol, 0.05% Proclin300, 0.5% BSA, pH 7.3.
Aliquoting is unnecessary for -20°C storage

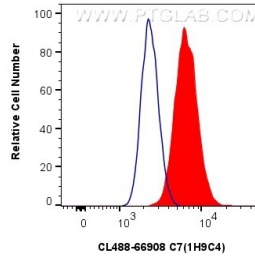
For technical support and original validation data for this product please contact:
T: 1 (888) 4PTGLAB (1-888-478-4522) (toll free in USA), or 1(312) 455-8498 (outside USA)
E: proteintech@ptglab.com
W: ptglab.com

This product is exclusively available under Proteintech Group brand and is not available to purchase from any other manufacturer.

Selected Validation Data



Immunofluorescent analysis of (-20°C Ethanol) fixed HepG2 cells using CoraLite® Plus 488 C7 antibody (CL488-66908, Clone: 1H9C4) at dilution of 1:200.



1x10⁶ HepG2 cells were intracellularly stained with 0.8 ug CoraLite® Plus 488-conjugated C7 Monoclonal antibody (CL488-66908, Clone:1H9C4) (red), or 0.8 ug CoraLite® Plus 488 Mouse IgG1 Isotype Control (1F8D3) (CL488-66360-1, Clone: 1F8D3) (blue). Cells were fixed with 4% PFA and permeabilized with Flow Cytometry Perm Buffer (PF00011-C).