

For Research Use Only

# CoraLite® Plus 488-conjugated ESRRB Monoclonal antibody

Catalog Number:CL488-66818



## Basic Information

<b>Catalog Number:</b> CL488-66818	<b>GenBank Accession Number:</b> BC131517	<b>Purification Method:</b> Protein G purification
<b>Size:</b> 100ul , Concentration: 0 µg/ml by Nanodrop;	<b>GeneID (NCBI):</b> 2103	<b>CloneNo.:</b> 3E10C1
<b>Source:</b> Mouse	<b>UNIPROT ID:</b> O95718	<b>Recommended Dilutions:</b> IF/ICC 1:50-1:500
<b>Isotype:</b> IgG1	<b>Full Name:</b> estrogen-related receptor beta	<b>Excitation/Emission maxima wavelengths:</b> 493 nm / 522 nm
<b>Immunogen Catalog Number:</b> AG18626	<b>Calculated MW:</b> 508 aa, 56 kDa	
	<b>Observed MW:</b> 47 kDa	

## Applications

<b>Tested Applications:</b> IF/ICC	<b>Positive Controls:</b> IF/ICC : Caco-2 cells,
<b>Species Specificity:</b> human, mouse, rat	

## Background Information

Estrogen related receptor beta (ESRRB), a NR3 Steroid Receptor, has been shown to affect early placental development. Also it can act as a repressor of transcriptional activity mediated by the glucocorticoid receptor (GR). It binds as a monomer to the extended half-site TNAAGTGCA and as a homodimer to the estrogen response element (ERE), palindromic thyroid hormone response element (TRE(pal)), and SF-1 response element, but not to the glucocorticoid response element (GRE). Estrogen related receptor beta mutations lead to abnormal development of the chorion and defective diploid trophoblast proliferation, and are lethal during midgestation. Expression has been documented in mice in the extra embryonic ectoderm that gives rise to the chorion. ESTs have been isolated from normal human eye, lung, and testis libraries. The ligand for the receptor is PPARgamma coactivator 1 (PGC-1) beta. ESRRB exists various isoforms and molecular weight of each isoform is 48 kDa,55 kDa and 56 kDa.

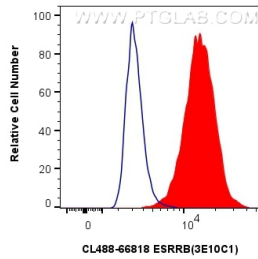
## Storage

**Storage:**  
Store at -20°C. Avoid exposure to light. Stable for one year after shipment.  
**Storage Buffer:**  
PBS with 50% Glycerol, 0.05% Proclin300, 0.5% BSA, pH 7.3.  
Aliquoting is unnecessary for -20°C storage

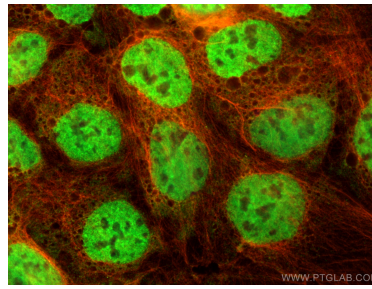
For technical support and original validation data for this product please contact:  
T: 1 (888) 4PTGLAB (1-888-478-4522) (toll free in USA), or 1(312) 455-8498 (outside USA)  
E: proteintech@ptglab.com  
W: ptglab.com

This product is exclusively available under Proteintech Group brand and is not available to purchase from any other manufacturer.

## Selected Validation Data



1x10<sup>6</sup> Caco-2 cells were intracellularly stained with 0.4 ug CoraLite® Plus 488-conjugated ESRRB Monoclonal antibody (CL488-66818, Clone:3E10C1) (red), or 0.4 ug CoraLite® Plus 488 Mouse IgG1 Isotype Control (1F8D3) (CL488-66360-1, Clone: 1F8D3) (blue). Cells were fixed and permeabilized with Transcription Factor Staining Buffer Kit (PF00011).



Immunofluorescent analysis of (4% PFA) fixed Caco-2 cells using CoraLite® Plus 488 ESRRB antibody (CL488-66818, Clone: 3E10C1) at dilution of 1:200, Alpha Tubulin antibody (80762-1-RR, Clone: 1G7, red).