

For Research Use Only

# CoraLite® Plus 488-conjugated ATPB Monoclonal antibody

Catalog Number:CL488-66600



## Basic Information

<b>Catalog Number:</b> CL488-66600	<b>GenBank Accession Number:</b> BC016512	<b>Purification Method:</b> Protein A purification
<b>Size:</b> 100ul , Concentration: 1000 ug/ml by Nanodrop;	<b>GeneID (NCBI):</b> 506	<b>CloneNo.:</b> 1A11B9
<b>Source:</b> Mouse	<b>UNIPROT ID:</b> P06576	<b>Recommended Dilutions:</b> IF/ICC 1:50-1:500
<b>Isotype:</b> IgG2b	<b>Full Name:</b> ATP synthase, H+ transporting, mitochondrial F1 complex, beta polypeptide	<b>Excitation/Emission maxima wavelengths:</b> 493 nm / 522 nm
<b>Immunogen Catalog Number:</b> AG11177	<b>Calculated MW:</b> 529 aa, 57 kDa	
	<b>Observed MW:</b> 45-57 kDa	

## Applications

<b>Tested Applications:</b> IF/ICC	<b>Positive Controls:</b> IF/ICC : HepG2 cells, HeLa cells
<b>Species Specificity:</b> human, mouse, rat	

## Background Information

ATP5B, also named as ATPMB and ATP5B, belongs to the ATPase alpha/beta chains family. It is a high affinity HDL receptor for apolipoprotein A1. ATP5B is a subunit of mitochondrial ATP synthase (F1F0 ATP synthase or Complex V). ATP5B has a calculated molecular mass of 57 kDa and ~5 kDa transit peptide can be removed in the mature form.

## Storage

**Storage:**  
Store at -20°C. Avoid exposure to light. Stable for one year after shipment.  
**Storage Buffer:**  
PBS with 50% Glycerol, 0.05% Proclin300, 0.5% BSA, pH 7.3.  
Aliquoting is unnecessary for -20°C storage

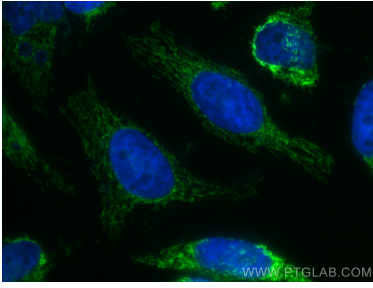
For technical support and original validation data for this product please contact:

T: 1 (888) 4PTGLAB (1-888-478-4522) (toll free  
in USA), or 1(312) 455-8498 (outside USA)

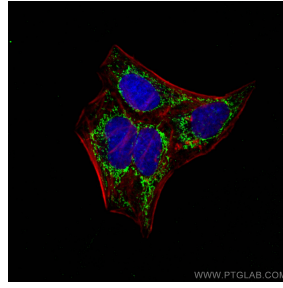
E: [proteintech@ptglab.com](mailto:proteintech@ptglab.com)  
W: [ptglab.com](http://ptglab.com)

**This product is exclusively available under Proteintech Group brand and is not available to purchase from any other manufacturer.**

## Selected Validation Data



Immunofluorescent analysis of (4% PFA) fixed HeLa cells using CoraLite® Plus 488 ATPB antibody (CL488-66600, Clone: 1A11B9) at dilution of 1:200.



Immunofluorescent analysis of (4% PFA) fixed HepG2 cells using CoraLite® Plus 488 ATPB antibody (CL488-66600, Clone: 1A11B9) at dilution of 1:200, CL594-Phalloidin (red).