

For Research Use Only

CoraLite® Plus 488-conjugated BCL10 Monoclonal antibody

Catalog Number:CL488-66556



Basic Information

Catalog Number: CL488-66556	GenBank Accession Number: BC053617	Purification Method: Protein A purification
Size: 100ul , Concentration: 1000 ug/ml by Nanodrop;	GeneID (NCBI): 8915	CloneNo.: 2E8G5
Source: Mouse	UNIPROT ID: O95999	Recommended Dilutions: IF/ICC 1:50-1:500
Isotype: IgG1	Full Name: B-cell CLL/lymphoma 10	Excitation/Emission maxima wavelengths: 493 nm / 522 nm
Immunogen Catalog Number: AG12162	Calculated MW: 233 aa, 26 kDa	
	Observed MW: 30-32 kDa	

Applications

Tested Applications: IF/ICC	Positive Controls: IF/ICC : HepG2 cells,
Species Specificity: Human	

Background Information

The gene encoding BCL10 was identified by its recurrent translocation t(1;14)(p22;q32) in a case of mucosa-associated lymphoid tissue (MALT) lymphoma. BCL10 contains a caspase recruitment domain (CARD), and has been shown to induce apoptosis and to activate NF-kappaB.

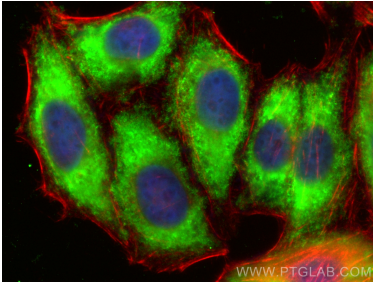
Storage

Storage:
Store at -20°C. Avoid exposure to light. Stable for one year after shipment.
Storage Buffer:
PBS with 50% Glycerol, 0.05% Proclin300, 0.5% BSA, pH 7.3.
Aliquoting is unnecessary for -20°C storage

For technical support and original validation data for this product please contact:
T: 1 (888) 4PTGLAB (1-888-478-4522) (toll free in USA), or 1(312) 455-8498 (outside USA)
E: proteintech@ptglab.com
W: ptglab.com

This product is exclusively available under Proteintech Group brand and is not available to purchase from any other manufacturer.

Selected Validation Data



Immunofluorescent analysis of (-20°C Ethanol) fixed HepG2 cells using CoraLite® Plus 488 BCL10 antibody (CL488-66556, Clone: 2E8G5) at dilution of 1:200, CL594-Phalloidin (red).