

For Research Use Only

CoraLite® Plus 488-conjugated TWIST2 Monoclonal antibody



Catalog Number:CL488-66544

Basic Information

Catalog Number: CL488-66544	GenBank Accession Number: BC033168	Purification Method: Protein G purification
Size: 100ul , Concentration: 1000 µg/ml by Nanodrop;	GeneID (NCBI): 117581	CloneNo.: 1B12D11
Source: Mouse	Full Name: twist homolog 2 (Drosophila)	Recommended Dilutions: IF 1:50-1:500
Isotype: IgG1	Calculated MW: 160 aa, 18 kDa	Excitation/Emission maxima wavelengths: 488 nm / 515 nm
Immunogen Catalog Number: AG2348	Observed MW: 22 kDa	

Applications

Tested Applications: IF	Positive Controls: IF : HepG2 cells,
Species Specificity: Human, rat, mouse	

Background Information

TWIST2, also named as BHLHA39 and Dermo1, is a basic helix-loop-helix protein which acts as a transcriptional regulator, plays a central role in differentiation of mesodermal during embryogenesis. TWIST2 inhibits the premature or ectopic differentiation of preosteoblast cells during osteogenesis, possibly by changing the internal signal transduction response of osteoblasts to external growth factors. It is also implicated in tumorigenesis, invasion and metastasis. TWIST2 forms both homodimers(45KD) and heterodimers with E2A E proteins, and dimer partner selection is a critical mediator of TWIST function. (PMID:14724576, 16502419).

Storage

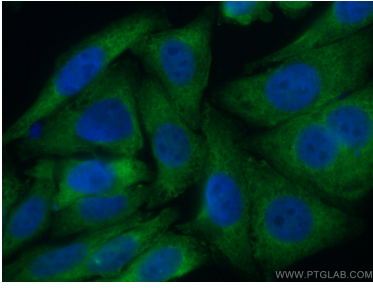
Storage:
Store at -20°C. Avoid exposure to light.
Storage Buffer:
PBS with 50% Glycerol, 0.05% Proclin300, 0.5% BSA, pH 7.3.
Aliquoting is unnecessary for -20°C storage

*** 20ul sizes contain 0.1% BSA

For technical support and original validation data for this product please contact:
T: 1 (888) 4PTGLAB (1-888-478-4522) (toll free in USA), or 1(312) 455-8498 (outside USA)
E: proteintech@ptglab.com
W: ptglab.com

This product is exclusively available under Proteintech Group brand and is not available to purchase from any other manufacturer.

Selected Validation Data



Immunofluorescent analysis of (4% PFA) fixed HepG2 cells using Coralite® Plus 488-conjugated TWIST2 antibody (CL488-66544, Clone: 1B12D11) at dilution of 1:100.