

For Research Use Only

CoraLite® Plus 488-conjugated Septin 7 Monoclonal antibody

Catalog Number: CL488-66542

Featured Product



Basic Information

Catalog Number:

CL488-66542

Size:

100ul , Concentration: 1000 ug/ml by Nanodrop;

Source:

Mouse

Isotype:

IgG1

Immunogen Catalog Number:

AG4309

GenBank Accession Number:

BC025987

GeneID (NCBI):

989

UNIPROT ID:

Q16181

Full Name:

septin 7

Calculated MW:

51 kDa

Observed MW:

48-51 kDa

Purification Method:

Protein G purification

CloneNo.:

1G12D1

Recommended Dilutions:

IF/ICC 1:50-1:500

Excitation/Emission maxima wavelengths:

493 nm / 522 nm

Applications

Tested Applications:

IF/ICC

Species Specificity:

human, mouse, rat

Positive Controls:

IF/ICC : MDCK cells,

Background Information

Septins (SEPTs) are members of a conserved family of cytoskeletal GTPases involved in various cellular processes, including cytoskeleton organization, cytokinesis, and membrane dynamics. Septin 7 is a unique septin required for filament formation. It has also been reported to be involved in migration and invasion in various cancer cells, including breast cancer and glioma.

Storage

Storage:

Store at -20°C. Avoid exposure to light. Stable for one year after shipment.

Storage Buffer:

PBS with 50% Glycerol, 0.05% Proclin300, 0.5% BSA, pH 7.3.

Aliquoting is unnecessary for -20°C storage

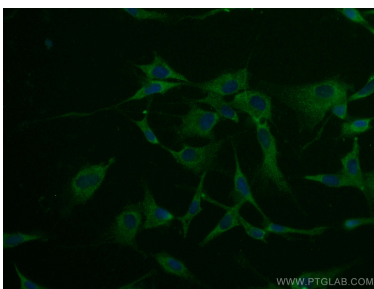
For technical support and original validation data for this product please contact:

T: 1 (888) 4PTGLAB (1-888-478-4522) (toll free in USA), or 1(312) 455-8498 (outside USA)

E: proteintech@ptglab.com
W: ptglab.com

This product is exclusively available under Proteintech Group brand and is not available to purchase from any other manufacturer.

Selected Validation Data



Immunofluorescent analysis of (-20°C Methanol) fixed MDCK cells using CoraLite® Plus 488 Septin 7 antibody (CL488-66542, Clone: 1G12D1) at dilution of 1:200.